



January 1996

# South Australian Economic Indicators

Published by the Australian Bureau of Statistics, Canberra, ACT 2600  
Telephone: (06) 252 3000 Fax: (06) 252 3001  
Internet: <http://www.abs.gov.au>  
This publication is available in microform and microfiche editions.  
For more information contact the Australian Bureau of Statistics, Canberra, ACT 2600  
Telephone: (06) 252 3000 Fax: (06) 252 3001  
Internet: <http://www.abs.gov.au>  
This publication is available in microform and microfiche editions.  
For more information contact the Australian Bureau of Statistics, Canberra, ACT 2600  
Telephone: (06) 252 3000 Fax: (06) 252 3001  
Internet: <http://www.abs.gov.au>

**ABS PUBLICATIONS, SOUTH AUSTRALIA**

Cat. No.	Publication	Latest issue	Date of issue
<b>GENERAL</b>			
1202.4	Information Paper : Guidelines for the Development of Community Surveys <i>irr</i>		14 Nov. 1985
1301.4	South Australian Year Book <i>a</i> (\$30.00)	1996	30 Nov. 1995
1302.4	Pocket Year Book of South Australia <i>a</i> (\$8.50)	1995	1 May 1995
1304.4	Local Government Area Statistics <i>irr</i> (\$20.00)	1993	30 July 1993
1306.4	South Australia at a Glance <i>a</i>	1995	24 Mar. 1995
1307.4	South Australian Economic Indicators <i>m</i> (\$12.00)	Dec. 1995	1 Dec. 1995
1352.4	Sales of Goods and Services by Businesses Involved in Water Related Activity in South Australia <i>irr</i> (\$10.00)	1992-93 and 1993-94	7 July 1995
<b>POPULATION AND VITAL STATISTICS</b>			
2840.4	Adelaide, a Social Atlas <i>irr</i> (\$45.00)	Census 1991	31 Mar. 1993
2841.4	Aboriginal People in South Australia <i>irr</i> (\$15.00)	Census 1991	11 Feb. 1994
3201.4	Estimated Resident Population in Statistical Local Areas, Preliminary <i>a</i> (\$10.70)	30 June 1992	15 Apr. 1993
3202.4	Estimated Resident Population in Statistical Local Areas <i>irr</i> (\$10.00)	June 1986 to 1991	28 Oct. 1993
3204.4	Estimated Resident Population by Age and Sex in Statistical Local Areas <i>a</i> (\$25.00)	30 June 1994	21 Apr. 1995
3311.4	Demography <i>a</i> (\$30.00)	1993	20 Feb. 1995
3312.4	Deaths <i>a</i> (\$15.00)	1993	6 Dec. 1994
<b>SOCIAL STATISTICS</b>			
4104.4	Aboriginal Births and Deaths, Review of Data Quality and Statistical Summary <i>irr</i> (\$9.50)	1988	16 Mar. 1990
4402.4	Community and Volunteer Work <i>irr</i> (\$7.50)	Oct. 1988	4 Aug. 1989
4509.4	Crime and Safety <i>irr</i> (\$11.50)	Apr. 1995	31 Aug. 1995
<b>PUBLIC FINANCE</b>			
5502.4	Local Government Finance <i>a</i> (\$10.70)	1991-92	21 May 1993
5503.4	State and Local Authorities Finance <i>a</i> (\$13.30)	1991-92	2 July 1993
<b>LABOUR FORCE</b>			
6201.4	Labour Force <i>q</i> (\$16.50)	May 1994	14 July 1994
6204.4	Womens Work <i>irr</i> (\$3.00)	July 1992	23 July 1992
6215.4	Women's Employment Patterns, Adelaide Statistical Division <i>irr</i> (\$10.00)	Nov. 1992	17 Feb. 1993
<b>RURAL</b>			
7111.4	Principal Agricultural Commodities, Preliminary <i>a</i> (\$11.00)	1993-94	12 Aug. 1994
7113.4	Agriculture <i>a</i> (\$27.00)	1993-94	16 Nov. 1995
7120.4	Agricultural Statistics : Selected Small Area Data <i>a</i> (\$16.50)	1992-93	11 May 1994
7221.4	Livestock and Livestock Products <i>a</i> (\$16.50)	1992-93	11 Feb. 1994
7330.4	Summary of Crops <i>a</i> (\$22.00)	1992-93	10 Mar. 1994
7503.4	Value of Agricultural Commodities Produced <i>a</i> (\$16.50)	1992-93	19 May 1994
<b>MANUFACTURING</b>			
8221.4	Manufacturing Industry <i>a</i> (\$16.50)	1991-92	31 Oct. 1994
<b>INTERNAL TRADE</b>			
8623.4	Retailing in South Australia <i>irr</i> (\$15.00)	1991-92	21 Jan. 1994
8635.4	Tourist Accommodation <i>q</i> (\$25.00)	Sept. qtr 1995	13 Dec. 1995
<b>BUILDING</b>			
8710.4	Housing and Locational Preferences, Adelaide Statistical Division <i>irr</i> (\$10.00)	1991	23 Aug. 1991
8731.4	Building Approvals <i>m</i> (\$12.00)	Oct. 1995	30 Nov. 1995
8741.4	Dwelling Unit Commencements Reported by Approving Authorities <i>m</i> (\$11.00)	Sept. 1995	12 Dec. 1995
8752.4	Building Activity <i>q</i> (\$12.00)	June qtr 1995	16 Oct. 1995
<b>TRANSPORT</b>			
9203.4	Drivers and Passengers : Travel to Work, Adelaide Statistical Division <i>irr</i> (\$10.00)	Oct. 1993	14 Dec. 1993

# **SOUTH AUSTRALIAN ECONOMIC INDICATORS**

**JANUARY 1996**

**A.J. Glendenning**  
**Acting Deputy Commonwealth Statistician**

© Commonwealth of Australia 1995

Produced by the Australian Government Publishing Service

## PREFACE

*South Australian Economic Indicators* is a monthly publication which contains the latest available data at the time of preparation for a range of statistical series that have been identified as indicators of economic activity in this State. In a number of cases the figures presented are preliminary and subject to revision in subsequent issues.

Written and graphic commentary have been included for many of the selected series and analysis has been augmented with the calculation of the percentage change from the previous reference period together with the presentation of comparative Australian data.

Time series information has been included to provide a historical perspective on many of the selected indicators. Future issues may be expanded to include further historical data in response to expressed user needs. This product is under continuous review and any suggestions for enhancement will be welcomed.

More detailed information on each series, including explanatory and technical notes, can be obtained from other Australian Bureau of Statistics publications or alternative data sources. To assist those seeking further information a source publication for each of the series has been documented in the statistical summary.

This issue includes a special article entitled *Grape Growing and Wine Production in South Australia, 1994-95*. Future issues will contain further articles on statistical topics which concentrate on longer term trends or other issues pertinent to the South Australian economy.

If you have any inquiries concerning this publication please contact the editor, John Callinan, telephone (08) 237 7307. All requests for statistical information should be directed to the ABS Information Service, GPO Box 2272, Adelaide SA 5001, telephone (08) 237 7100.

A.J. Glendenning  
Acting Deputy Commonwealth  
Statistician

Australian Bureau of Statistics  
Adelaide  
December 1995



# CONTENTS

Page

Preface iii

## REVIEW

2

Overview  
State accounts  
International accounts  
Consumption and investment  
Production  
Prices  
Labour force and demography  
Incomes  
Financial markets  
Forward Outlook

## STATISTICAL SUMMARY

15

State accounts  
International accounts  
Consumption and investment  
Production  
Prices  
Labour force and demography  
Incomes  
Financial markets

## FOCUS

Grape Growing and Wine Production in SA 1994-95 17

## TIME SERIES

State accounts - current prices 20  
State accounts - average 1989-90 prices 21  
Merchandise exports by commodity group 22  
Merchandise exports by country 22  
Merchandise exports by industry of origin 23  
Merchandise imports by commodity group 23  
Turnover of retail establishments by industry 24  
New motor vehicle registrations by type of vehicle 25  
Actual private new capital expenditure by selected industry  
and type of asset 26  
Tourist accommodation 27  
Building approvals 28  
Building commencements 29  
Value of building work done during period 29  
Production, livestock and selected commodities 30  
Consumer price index, by group 32  
Average retail prices of selected consumer items 33  
Estimated resident population and components of population  
change 33  
Labour force - numbers 34  
Labour force - rates 35  
Labour force - regions 36  
Average weekly earnings of employees 38  
Finance commitments 39

For more information

40

# REVIEW

---

## Overview

---

- The trend unemployment rate for South Australia has declined over the past twelve months; from 10.2% in November 1994 to 9.4% in November 1995.
- The November 1995 trend estimate of employed persons in South Australia (655,400) has decreased slightly from September 1995 (657,100).
- The trend estimate of retail sales in South Australia increased by 0.3% in October 1995 matching the Australian rise of 0.3%.
- The October 1995 trend estimate for total dwelling units approved was 599 compared with the September figure of 582, an increase of 2.9%.
- The steep fall in the number of dwelling units commenced in South Australia over the 9 months to June 1995 was halted during the September quarter 1995. Although the 1,767 commenced is unchanged from June quarter it is the equal lowest since 1981.
- The October 1995 value of non-residential projects approved was \$69.2 million, more than double the September 1995 total of \$31.1 million and \$42.5 million higher than the October 1994 total.
- At 30 June 1995 the estimated resident population of South Australia was 1,473,966. The increase for the year ended 30 June 1995 was 4,595 persons (0.31%) while the national increase was 1.21%. The continuing low growth rate for South Australia is attributable to large net outflow in interstate migration of 1,876 persons.
- The trend estimate for new motor vehicles registered in October 1995 decreased 1.3% on September 1995. This is the sixth month of trend decline following an eight month period of growth.
- The October 1995 trend estimate for the total value of housing finance commitments (excluding alterations and additions) increased by 5.3% from the September estimate and was 4.1% higher than October 1994.
- Exports for the four months to October 1995 decreased 4.4% on the corresponding period last year while imports for the four months to October 1995 increased 1.3% on the corresponding period.



## State Accounts

*Trend Estimates (Current Prices)* The Gross State Product (GSP) trend estimate in current prices for the June quarter 1995 rose 1.5% from the previous quarter to be 4.7% above the estimate for the June quarter 1994.

Wages, salaries and supplements increased by 0.7% in the June quarter and had risen by 2.3% over the twelve month period, well below the national increase of 7.7%.

Increases in gross operating surplus exceeded the corresponding national growth rates from the June quarter 1994 following a 2.0% rise in the June quarter 1995. The June quarter 1995 estimate was 7.3% higher than for the same period last year.

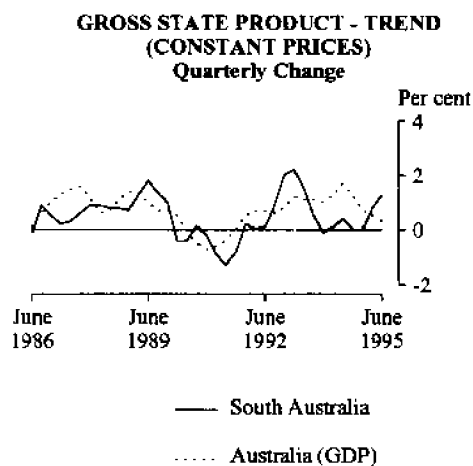
The rate of growth in indirect taxes less subsidies increased in the June quarter, with a rise of 3.2%, while growth over the year to the June quarter 1995 was 6.4%.

*Trend Estimates (Constant Prices)*

The trend estimate for South Australian State Final Demand (SFD) in constant 1989-90 prices increased by 0.4% in the June quarter to a level 5.6% above that of the June quarter 1994.

Private final consumption expenditure increased by 1.6% in the June quarter. Private gross fixed capital expenditure on equipment was the major contributor to the decline in private gross fixed capital expenditure of 7.6%. Private expenditure on dwellings fell for the third consecutive quarter.

The increase of 2.7% in public final demand for the June quarter 1995 was the largest increase for several years. Government consumption rose for the first time since June quarter 1994 and contributed 0.5% to the growth in SFD.



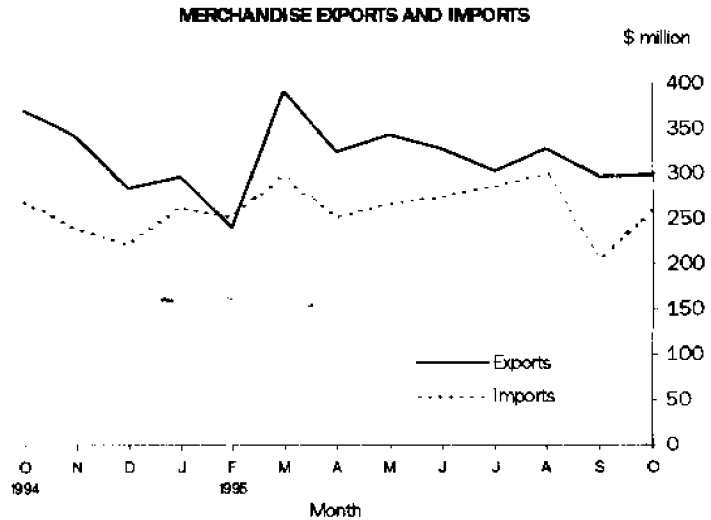
The experimental GSP trend estimate in 1989-90 prices, grew by 1.3% in the June quarter 1995, well above the national average of 0.3% for that quarter. However the South Australian increase of 2.1% for the year was below the national figure of 2.8%.

Experimental estimates of real Gross State Income (real GSI) *i.e.* GSP(I) adjusted for the terms of trade effect, also rose by 1.3% in the June quarter 1995. The terms of trade showed no change.

## International Accounts

### Exports

The total value of overseas exports of South Australian produced commodities was \$299 million in October 1995. This compares with a value of \$297 million in the previous month and \$370 million in October 1994. Exports for the four months to October 1995 totalled \$1,225 million a decrease of 4.4% on the corresponding period last year (\$1,282 million).



### Imports

The total value of overseas imports into South Australia (designated as the State of final destination) in October 1995 was \$257 million. While this was an increase of 26% on September it was a decrease of 4.7% on October 1994. Imports for the four months to October 1995 totalled \$1,047.6 million an increase of 1.3% on the corresponding period last year (\$1,047 million).

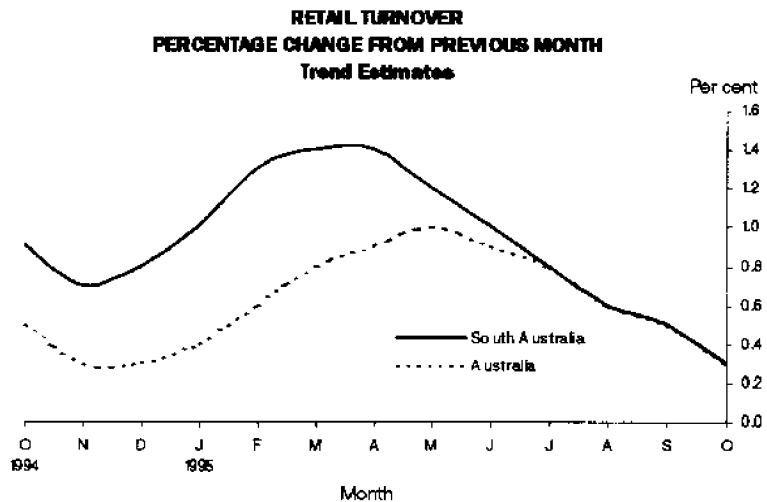
## Consumption and Investment

### Retail Turnover

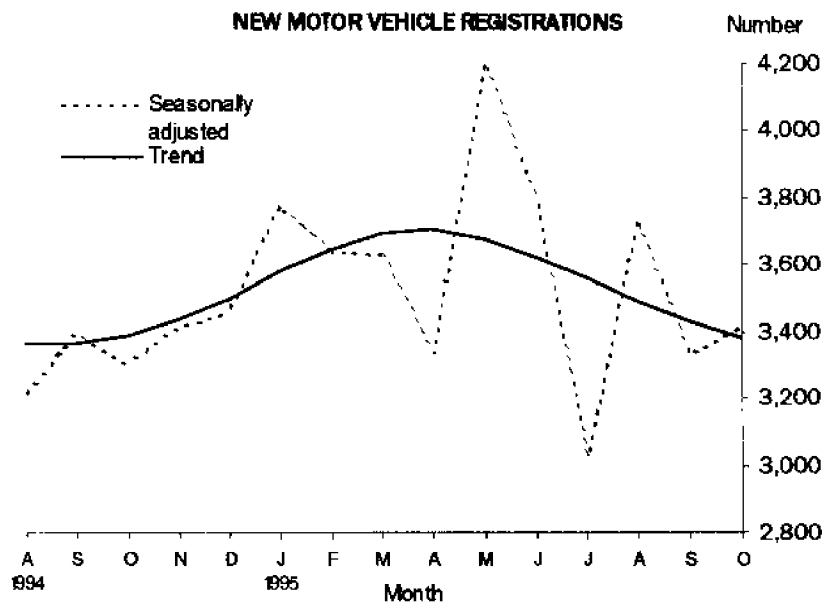
The retail trade trend estimate indicates that retail sales in South Australia increased by 0.3% in October 1995 matching the Australian rise of 0.3%. Since August the trend estimate has increased by \$5.7 million of which \$6.4 million was attributable to the food retailing group, \$0.7 million to the recreational good retailing group and \$1.6 million to other retailing. Strong growth in these groups has been partly negated by little change in the trend for department stores group, household good retailing group and hospitality and services group.

In seasonally adjusted terms retail trade in October 1995 decreased 1.3% on September 1995. In original terms, South Australian retail turnover was \$774.0 million for October 1995, an increase of 10.5 per cent on October 1994.

Over the period July to October 1995 the trend estimate growth rates for South Australia and Australia have been coincident.



**New Motor Vehicle Registrations** The South Australian trend estimate for new motor vehicle registrations in October 1995 decreased 1.3% on September 1995. This is the sixth month of trend decline following an eight month period of growth. The seasonally adjusted estimate for October 1995 increased by 2.7% from September 1995 and 3.5% from October 1994.



In original terms there were 3,644 new motor vehicles registered in October 1995, an increase of 5.6% from September 1995 and 8.1% above October 1994. For new passenger vehicles only, the leading makes registered in October 1995 were Holden (799 vehicles), Ford (715), Mitsubishi (603), Toyota (346) and Hyundai (139).

#### *Tourist Accommodation*

When the September quarter 1995 is compared with the September quarter 1994, the number of rooms available in hotels, motels and guest houses in South Australia increased from 10,560 to 10,703 while bed spaces increased from 29,749 to 30,227. Overall the room occupancy rate rose from 48.7% to 50.3%, ranging from 26.5% for one star establishments to 66.1% for five star establishments. Regional room occupancy rates ranged from 58.1% in the Adelaide Statistical Division to 34.2% in the Outer Adelaide Statistical Division. The room occupancy rate of 50.3% was the highest September quarter result since 51.3% in 1989. Takings from accommodation increased by 6.7% from \$34.7 million to \$37.1 million with average takings per room night occupied rising from \$74 to \$75.

**Private New Capital Expenditure** The trend estimate for private new capital expenditure in South Australia for the June quarter 1995 was 6.7% lower than in the previous quarter. The fall for South Australia went against the national trend, with all other States recording increases and the national estimate rising by 4.2%. The South Australian estimate for the quarter now represents only 5.3% of the national estimate.

Private new capital expenditure in original terms for the June quarter 1995 was \$504 million, an increase of 10.4% over the March quarter. Buildings and structures accounted for \$77 million of this expenditure, and equipment, plant and machinery for \$427 million.

## Production

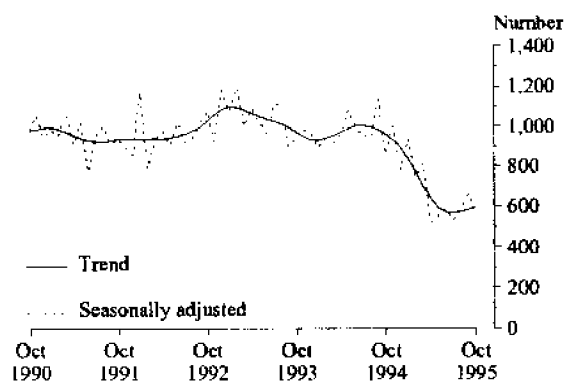
### Dwelling Approvals

The October 1995 trend estimate for total dwelling units approved was 599 compared with the September figure of 582, an increase of 2.9%. The number of dwelling units approved in original (unadjusted) terms for South Australia in October 1995 was 519, a decrease of 12.3% on the previous month.

When expressed as average 1989-90 prices, the value of new residential building work in South Australia for the September quarter 1995 was \$123.9 million, a 7.3% increase on the previous quarter but a 38.8% decrease on the September quarter 1994.

For the whole of Australia, the trend for the total number of dwelling units approved fell 2.2% in October 1995 to 10,295. The total original number of dwelling units approved in Australia was 10,348, a decrease of 6.5% from 11,068 in September 1995 and 33.5% lower than October 1994.

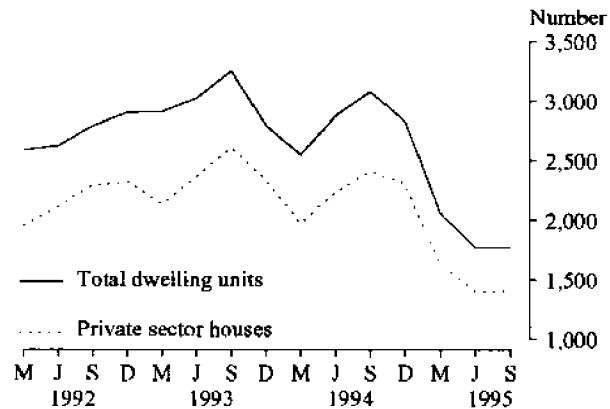
DWELLING UNITS APPROVED



### Dwelling Commencements

The steep fall in the number of dwelling units commenced in South Australia over the 9 months to June 1995 was halted during the September quarter 1995. Preliminary data from the Building Activity Survey shows that the estimated number of dwelling units commenced during the September quarter 1995 was 1,767. Although this is unchanged from the previous quarter and the equal lowest since the June quarter 1981, it compares with a corresponding decline for the September quarter 1995 of 7.7% nationally. The latest figure for South Australia was 42.7% below the total for the September quarter 1994 while the national decrease over the twelve month period was 32.7%.

## NEW DWELLING UNITS COMMENCED



*Value of Non-residential Building Approvals*

For South Australia the October 1995 value of non-residential projects approved was \$69.2 million. This was more than double the September 1995 total of \$31.1 million and \$42.5 million higher than the October 1994 total.

When expressed as average 1989-90 prices the value of non-residential building work approved for the September quarter 1995 was \$90.0 million, a 42.9% decrease on the June quarter 1995.

In October 1995 South Australia contributed 6.0% to the total value of Australian non-residential building approvals of \$1,162.5 million.

*Value of Total Building Activity*

The total value of *building work commenced* in South Australia during the June quarter 1995 recorded a 37.8% recovery to \$394.7 million from the previous quarter low of more than 8 years. Recovery was confined to the non-residential sector and was mainly due to two large public sector jobs, one for \$48.0 million and one for \$55.0 million in the offices and educational categories respectively. Compared with the June quarter 1994, the latest figure for South Australia represented a 17.1% increase in building commencements while the corresponding national movement was a 12.3% decrease. However, the South Australian share of the national total of building commencements in the June quarter was only 6.1%.

The total value of *building work done* during the June quarter 1995 increased by a relatively modest 4.9% from the March quarter to \$333.0 million. This movement compared with an increase of 9.1% nationally and resulted in a fall in this State's share of the total Australian value to 4.8%. Compared with the June quarter 1994, the latest figure for South Australia represented a 6.8% decrease in the value of total building work done, while there was a corresponding 1.4% increase nationally.

After falling for 11 successive quarters, the value of *building work yet to be done* in South Australia rose 23.7% to \$350.9 million at the end of June 1995, in contrast to a national decrease of 1.8%.

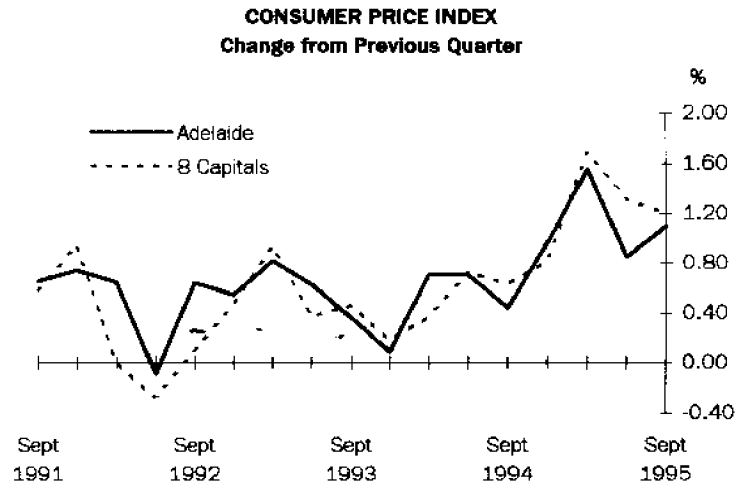
*Value of Engineering Construction*

In the June quarter 1995 engineering construction work done in South Australia increased by 27.9% over the previous quarter to \$201.0 million, resulting in the State's share of the national total increasing slightly to 5.4%.

## Prices

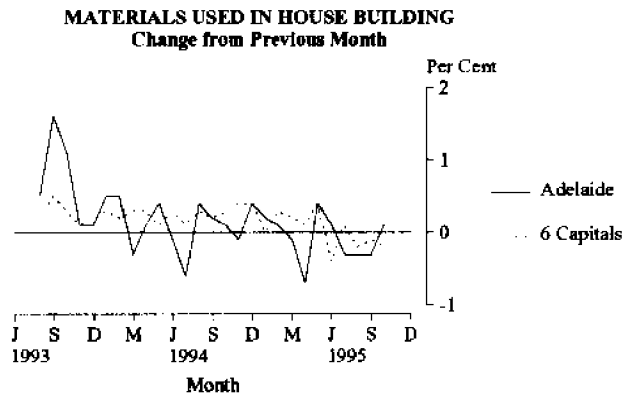
### Consumer Price Index

In the September quarter 1995 the all groups Consumer Price Index increased by 1.2% nationally, contributing to an annual increase of 5.1%. For Adelaide, the quarterly movement was 1.1% while the annual increase was 4.5%.



### House Building Materials

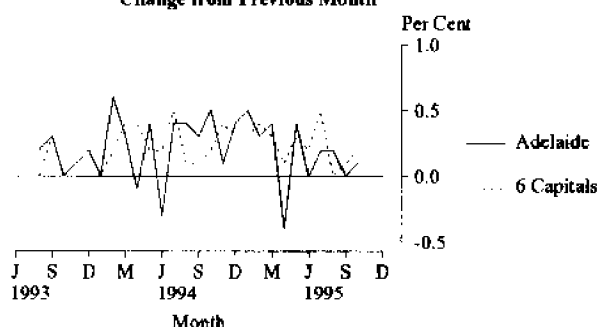
In October 1995, Sydney, Melbourne and Brisbane recorded falls in the Price Index of Materials used in House Building from the previous month of 0.4%, 0.1% and 0.2% respectively. Adelaide and Perth both recorded a rise of 0.1% for the same period. The weighted average of the six State capitals showed a fall of 0.2%. From October 1994, Adelaide was the only capital to record a fall (0.4%) for the twelve months. For the same twelve month period, Hobart has recorded the highest rise of 3.6%, followed by Perth (3.1%), Sydney (1.1%) and Brisbane (0.5%). The weighted average for the six State capitals for this period was a rise of 1.0%.



### Non-house Building Materials

In October 1995, Brisbane was the only capital to record a fall from the previous month (0.2%) in the Price Index of Materials used in Building other than House Building. For this period, Hobart recorded the highest rise (0.5%), followed by Melbourne and Perth (0.4%), Sydney (0.2%) and Adelaide (0.1%). The weighted average of the six State capitals showed a rise of 0.2%. From October, all capitals recorded rises for the twelve months, the highest being Perth (3.8%), followed by Hobart (3.7%) and Brisbane (3.0%). For this period Adelaide recorded the lowest rise of 2.1%. The weighted average of the six State capitals for the twelve months was 2.9%.

**MATERIALS USED IN BUILDING  
OTHER THAN HOUSE BUILDING**  
Change from Previous Month



### House Prices

Between June and September quarters 1995 the Price Index of Established Houses and Project Homes in Adelaide decreased by 1.1% and 1.2% respectively. Over the same period, prices for Established houses and Project Homes in Australia rose by 0.2% and 0.8% respectively.

In Adelaide over the twelve months to September quarter 1995, there was a price decrease of 2.9% for Established Houses and a decrease also for Project Homes, of 1.0%. Nationally, for the twelve month period, Established House prices recorded no change, while Project Homes rose by 2.0%.

## Labour Force and Demography

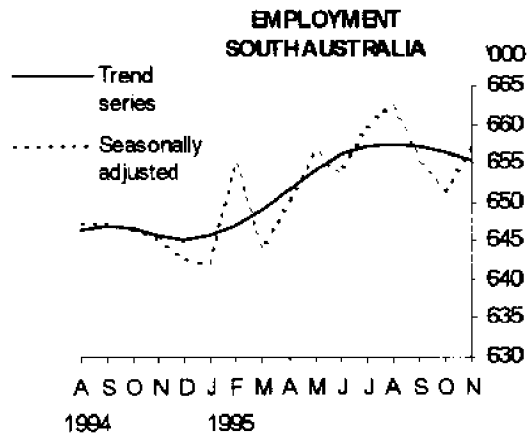
### Population

At 30 June 1995 the estimated resident population of South Australia was 1,473,966, an increase of 964 (0.07%) during the quarter. The increase for the year ended 30 June 1995 was 4,595 persons (0.31%) while the national increase was 215,588 persons (1.21%). The continuing low growth rate for South Australia is attributable to large net outflow in interstate migration of 1,876 persons which is offset by a net inflow of overseas migration of 770 persons and natural increase of 2,040. Both net overseas migration and natural increase were substantially lower than for the March quarter.

### Employment

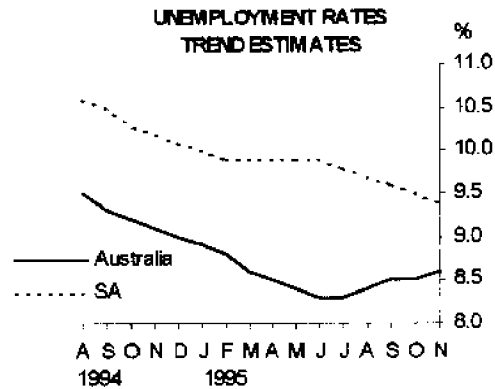
The underlying trend estimate of employed persons in Australia (8,284,600 in November 1995) has been increasing since February 1993. In the twelve months to November 1995, full-time and part-time employment have increased by 2.9% and 3.6% cent respectively.

The November 1995 trend estimate of employed persons in South Australia (655,400) has decreased slightly from September 1995 (657,100), following a general increase between January 1995 and August 1995. The November 1995 estimate (655,400) was 1.5% higher than the level of 12 months ago.



### Unemployment

The provisional trend estimate of the unemployment rate in Australia has increased to 8.6% over the past four months, reversing the general downward movement evident since January 1993.



The trend unemployment rate for South Australia has declined over the past twelve months; from 10.2% in November 1994 to 9.4% in November 1995. For this same period, the trend unemployment rate for males has decreased from 10.9% to 10.4%, while the rate for females has decreased from 9.4% to 8.1%.

### Overtime

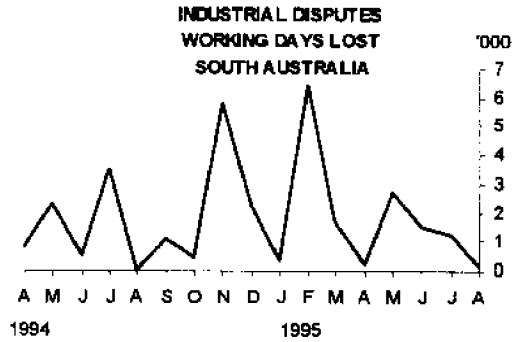
The proportion of employees who worked overtime in South Australia in August 1995 was 15.9% compared with 18.5% in August 1994.

### Industrial Disputes

There were 100 working days lost through industrial disputes in South Australia during August 1995. At less than 1% of the national total (43,300), South Australia experienced the lowest level of industrial dispute of all mainland States.

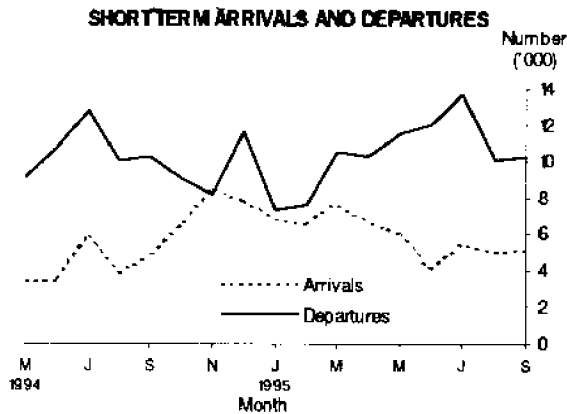
In the twelve months to August 1995, 23,400 working days were lost due to industrial disputes in South Australia.





**Short-term Overseas Visitor Arrivals**

The estimated number of short-term overseas visitor arrivals staying in South Australia in September 1995 was 5,092, a rise of 1.8% over the previous month, and 8.2% over the number in September 1994. South Australia's share of the Australian total for September was 1.9% in both years.



**Short-term Resident Departures**

The number of short term departures of South Australian residents in the month of September was also stable, rising 1.8% over the previous month to 10,254. This was only 0.4% higher than the departures of residents in September 1994.

**Incomes**

**Average Weekly Earnings**

The trend estimate of average weekly ordinary time earnings of full-time adult employees in South Australia rose from \$614.60 in May 1995 to \$616.50 in August 1995. Male full-time ordinary time earnings increased from \$640.20 in May 1995 to \$641.60 in August 1995, while the comparable level for females increased from \$561.80 to \$562.10.

Between May 1995 and August 1995, the trend estimate of average weekly total earnings of all employees in South Australia decreased from \$516.00 to \$515.30.

Since it is an average of earnings across all employees, changes in average weekly earnings may occur through changes in employment as well as changes in pay levels.

**Award Rates of Pay**

Over the 12 months to October 1995, the weekly award rates of pay index for full-time employees in South Australia increased by 1.6 per cent.

For full-time adult male employees, the largest annual movement of the index occurred in the recreation, personal and other services industry, with an increase of 2.7 per cent. For full-time adult female employees, the largest annual movement of the index occurred in public administration and defence, with an increase of 2.9 per cent.

## Financial Markets

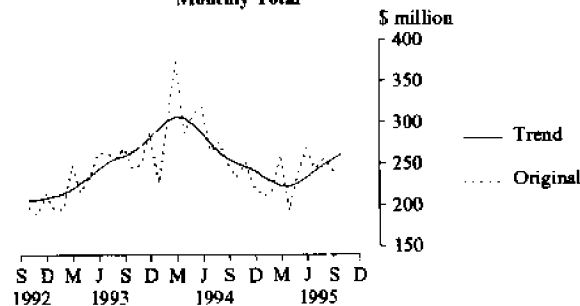
### Housing Finance

The South Australian October 1995 trend estimate for total value of commitments (excluding alterations and additions) increased by 5.3% to \$260.5 million from the September estimate and was 4.1% higher than October 1994.

State trend estimates are only published for total value of commitments (excluding alterations and additions) and therefore the commentary on individual categories which follows is based on the original series only.

Total housing finance commitments (original figures including alterations and additions) increased by 3.5% to \$269.2 million compared with the previous month and were 6.0% higher than in October 1994. The refinancing component of \$51.6 million reached 19.2% of total new lending commitments.

**SECURED HOUSING FINANCE COMMITMENTS  
TO INDIVIDUALS (ALL LENDERS)  
(Excluding Alterations and Additions)  
Monthly Total**



Finance commitments for construction of dwellings for the past ten months were significantly below the equivalent months of the past two years with October 1995, 3.2% below the September figure. Finance commitments for the purchase of established dwellings, the largest category, were up by 46% to \$156.4 million compared with the previous month and down by 0.1% compared with October 1994. Commitments for the purchase of newly erected dwellings decreased by 10.6% to \$13.1 million.

### Personal Finance

Personal finance commitments continued its upward trend with an increase of 2.8% to \$187.6 million during October. The first ten months of 1995 were significantly above the corresponding months of the past decade.

Total personal finance commitments under fixed loan commitments fell by 4.9% to \$121.0 million in October 1995 following the high figures recorded in previous months, but were 5.2% higher than October last year. Sales of used motor vehicles and station wagons, the largest category under fixed loan commitments, decreased by 1.7% to \$39.2 million during the month of October but is still 6.9% higher than October 1994. Sales of new motor vehicles and station wagons increased during the month, rising by 16.0% to \$13.1 million, but 9.3% lower than October 1994.

Total personal finance commitments under revolving credit commitments increased to \$66.5 million, 205% above the previous month and 37.4% above October 1994.

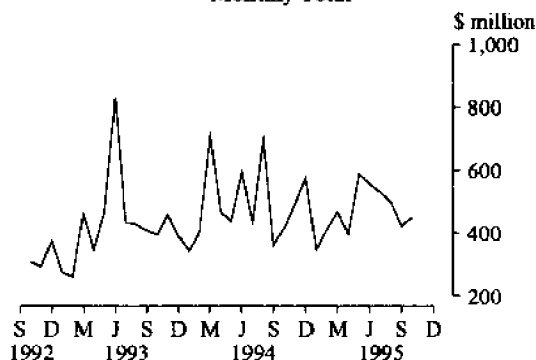
#### Commercial Finance

South Australian commercial finance commitments increased by 6.7% to \$449.7 million in October from the September figure, 7.7% higher than in October 1994.

Commercial finance commitments under fixed loan facilities decreased by 3.7% to \$251.8 million during October but were \$18.7 million above the level of September 1994. Mining and manufacturing increased substantially but remain below October 1994.

Commitments under revolving credit facilities increased by 23.7% to \$198.0 million in October from September and were up by 7.3% from October 1994. Agriculture, forestry, fishing and hunting recovered after a low month in September. Manufacturing, wholesale trade and finance, investment and insurance also had big increases. Commitments for property and business services dropped after the high total in the previous month.

COMMERCIAL FINANCE COMMITMENTS  
(SOUTH AUSTRALIA)  
Monthly Total



#### Lease Finance

The value of goods under new finance lease commitments increased during October by 3.3% to \$18.8 million compared with the previous month and was 8.5% below October 1994.

The main increases in new finance lease commitments were for the categories of construction and earth moving equipment, new light trucks and shop and office furniture, fittings and equipment which recovered after low figures in the previous month.

Lease commitments for new motor vehicles and station wagons not subject to depreciation, the largest category, decreased by 19.1% to \$4.9 million, 26.0% below October 1994. Used motor vehicles and station wagons not subject to depreciation increased by 14.1% to \$2.7 million. New motor vehicles subject to depreciation increased by 27.3% to a total of \$2.2 million. Used motor vehicles subject to depreciation increased to \$0.1 million.

## Forward Outlook

### Composite Leading Indicator

The Composite Leading Indicator (CLI) is a single time series produced by aggregating eight individual economic indicators, and has been developed by the ABS as an experimental series to supplement existing forms of economic analysis and modelling.

The CLI summarises the early signals contained in a selection of economic indicators and is designed to help in the detection of turning points between successive expansions and contractions of economic activity but does not attempt to forecast the level of economic activity.

The main features of the Australian September quarter 1995 data were:

- a fall of 0.36%, the fourth consecutive fall since the September quarter 1994 peak.. However the rate of fall eased from 0.65% in the June quarter.
- the turning point in the CLI is coincident with the last turning point in the reference series; deviations in the trend growth rate of GDP(A) from its historical long-term trend..

The quarterly data are released in more detail in the *Australian Economic Indicators* (1350.0). The CLI was the topic of the Focus article in the September 1993 edition of *South Australian Economic Indicators* (1307.4).

### Australian Business Expectations

Surveys of business expectations have been a feature of the economic intelligence available to decision makers for a number of years. The main output from these surveys has been a qualitative indicator which provides the net proportion of businesses predicting a rise or fall in future business conditions. Further details about these surveys which are conducted quarterly by the ABS are available in *Australian Business Expectations* (1250.0), the September 1994 edition of *Australian Economic Indicators* (1350.0) and the May 1994 edition of *South Australian Economic Indicators* (1307.4).

#### AUSTRALIAN BUSINESS EXPECTATIONS SOUTH AUSTRALIA AND AUSTRALIA SALES OF GOODS AND SERVICES EXPECTED PERCENTAGE AGGREGATE CHANGE

Reference Period	Short term(a)		Medium term(b)	
	South Australia	Australia	South Australia	Australia
1994				
June quarter	2.0	1.9	4.1	3.3
September quarter	4.5	2.3	3.2	4.1
December quarter	-0.1	-0.5	2.8	3.3
1995				
March quarter	1.8	1.4	1.1	3.0
June quarter	0.2	1.3	0.8	2.3
September quarter	1.6	2.1	2.4	3.4

(a) Short term is the following quarter.

(b) Medium term is the same quarter in the following year.

#### Short term

Businesses in South Australia expected a rise of 1.6% in sales in the December quarter compared with the September quarter 1995 while the national expectation was a 2.1% increase.

#### Medium term

Businesses in South Australia anticipated a lower growth in sales (2.4%) than the national expectation of 3.4% for the September quarter 1996 compared with the September quarter 1995.

---

# SOUTH AUSTRALIAN Year book 1996

---

## ***Your Complete Reference***

The 1996 *South Australian Year Book* is the State's encyclopaedia – nearly 400 pages of information on natural and social environment, geography, government, population, economy, social conditions, agriculture, manufacturing, commerce, finance, tourism, mining and energy industries.

## ***New Features***

This edition contains new features on:

- + major events that occurred in 1994–95
- + a regional article on the Fleurieu Peninsula
- + cameos on the Cricket Academy, Adelaide Botanic Gardens and Carrick Hill.

*For Order Form see the last page of this publication.*

---

# STATISTICAL SUMMARY

Indicator		Reference period	SOUTH AUSTRALIA			AUSTRALIA			SA as a % of Australia	Source index
			No.	% change		No.	% change			
				Over pre- ceding period	Over same period previous year		Over pre- ceding period	Over same period previous year		
<b>State Accounts</b>										
Gross domestic product (I)										
Current prices	\$m	June qtr 95	8,448	3.7	4.9	115,612	1.3	5.6	7.3	1
1989-90 prices trend	\$m	June qtr 95	7,462	1.3	2.1	104,172	0.3	2.8	7.2	1
Wages, salaries and supplements										
Current prices trend	\$m	June qtr 95	4,172	0.7	2.3	57,522	2.1	7.7	7.3	1
Private final consumption expenditure										
Current prices	\$m	June qtr 95	5,463	4.0	9.0	72,352	1.7	6.9	7.6	1
1989-90 prices trend	\$m	June qtr 95	4,819	1.6	6.2	63,035	0.7	4.3	7.6	1
Private gross fixed capital expenditure										
1989-90 prices trend	\$m	June qtr 95	1,060	-7.6	-7.6	17,856	-2.5	1.8	5.9	1
<b>International Accounts</b>										
Exports (excluding re-exports)	\$m	Oct. 95	298.5	0.5	-19.3	5,918.0	-0.3	7.1	5.0	2
Imports	\$m	Oct. 95	257.3	26.2	-4.7	6,955.6	10.7	10.6	3.7	2
<b>Consumption and Investment</b>										
Retail turnover										
Current prices original	\$m	Oct. 95	774.0	3.5	10.5	9,934.8	3.4	6.6	7.8	3
Current prices trend	\$m	Oct. 95	774.9	0.3	11.6	9,936.2	0.3	7.6	7.8	3
1989-90 prices original	\$m	Sep. qtr 95	1,886.6	0.8	10.0	24,511.5	1.3	4.4	7.7	3
New motor vehicle registrations										
Original	No.	Oct.95	3,644	5.6	8.1	53,460	8.5	-1.6	6.8	4
Trend	No.	Oct.95	3,381	-1.3	-0.2	50,614	-1.8	-3.2	6.7	4
Takings, licensed hotels, motels and guest houses with facilities										
	\$m	Sep. 95	37.1	3.6	6.7	n.y.a.	n.y.a.	n.y.a.	n.y.a.	5
Private new capital expenditure										
Current prices original	\$m	June qtr 95	504	10.4	24.2	9,519	20.9	17.3	5.3	6
Current prices trend	\$m	June qtr 95	487	-6.7	14.3	9,233	4.2	19.1	5.3	6
Private new capital expenditure										
	\$m	1994-95	2,072	..	39.0	34,657	..	20.5	6.0	6
Expected private new capital expenditure	\$m	6 Months to Dec. 95	n.y.a.	..	n.y.a.	18,963	..	11.7	n.y.a.	6
Expected private new capital expenditure	\$m	1995-96	n.y.a.	..	n.y.a.	35,456	..	3.6	n.y.a.	6
<b>Production</b>										
Dwelling unit approvals										
Original	No.	Oct. 95	519	-12.3	-35.4	10,348	-6.5	-33.5	5.0	7
Trend	No.	Oct. 95	599	2.9	-37.4	10,295	-2.2	-35.4	5.8	7
Dwelling unit commencements										
Value of non-residential building approvals	\$m	Oct. 95	69.2	122.5	159.2	1,162.5	34.4	31.2	6.0	7
Value of total building activity										
Commenced	\$m	June qtr 95	394.7	37.8	17.1	6,458.9	-5.7	-12.3	6.1	8
Work done	\$m	June qtr 95	333.0	4.9	-6.8	6,972.4	9.1	1.4	4.8	8
Work yet to be done	\$m	June qtr 95	350.9	23.7	5.0	9,475.2	-1.8	3.4	3.7	8
Value of engineering construction work done										
	\$m	June qtr 95	201.0	27.9	0.7	3,713.9	23.1	4.5	5.4	9
Manufacturing production										
Electricity (SA and NT)	mill. kWh	Oct. 95	672	-2.0	-19.9	13,714	-0.2	1.9	4.9	10
Cheese	tonnes	Aug. 95	2,450	12.4	-18.8	13,630	32.9	-0.8	18.0	10
Red meat	tonnes	Oct. 95	20,991	5.7	2.3	220,644	-2.2	-8.1	9.5	11
Mineral exploration expenditure (other than for petroleum)										
	\$m	June qtr 95	6.6	43.5	13.8	244.6	28.5	10.9	2.7	12

Indicator	SOUTH AUSTRALIA						AUSTRALIA			SA as a % of Australia	Source index	
	Reference period	No.	% change			% change		No.	Over pre- ceding period year			Over pre- ceding period year
			Over			Over						
			Over pre- ceding period year	Over pre- ceding period year	Over pre- ceding period year	Over pre- ceding period year	Over pre- ceding period year					
<b>Prices</b>												
CPI - All groups	1989-90=100	Sep. qtr 95	120.1	1.1	4.5	117.6	1.2	5.1	..	13		
Price index of materials used in house building	1985-86=100	Oct. 95	153.3	0.1	-0.4	157.3	-0.2	1.0	..	14		
Price index of materials used in building other than houses	1989-90=100	Oct. 95	112.6	0.1	2.1	112.7	0.2	2.9	..	15		
Established house price index	1989-90=100	Sept. qtr 95	110.0	-1.1	-2.9	112.6	0.2	0.0	..	16		
Price index of project homes	1989-90=100	Sept. qtr 95	113.2	-1.2	-1.0	109.6	0.8	2.0	..	16		
<b>Labour Force and Demography</b>												
Population (resident at end qtr)	'000	June qtr 95	1,474.0	0.1	0.3	18,054.0	0.3	1.2	8.2	17		
Labour force												
Original	'000	Nov. 95	721.8	0.4	0.5	9,066.6	0.7	3.2	8.0	18		
Trend	'000	Nov. 95	723.8	-0.2	0.7	9,063.9	0.2	2.5	8.0	18		
Employed persons												
Original	'000	Nov. 95	657.8	1.1	1.8	8,329.8	0.8	3.8	7.9	18		
Trend	'000	Nov. 95	655.4	-0.1	1.5	8,284.6	0.1	3.1	7.9	18		
Participation rate												
Original (a)	%	Nov. 95	61.6	0.3	0.1	63.8	0.4	1.0	..	18		
Trend (a)	%	Nov. 95	61.7	-0.2	0.1	63.8	0.0	0.7	..	18		
Unemployment rate												
Original (a)	%	Nov. 95	8.9	-0.6	-1.1	8.1	-0.1	-0.6	..	18		
Trend (a)	%	Nov. 95	9.4	-0.1	-0.8	8.6	0.1	-0.5	..	18		
Job vacancies	'000	Aug. qtr	2.5	-24.2	-44.4	62.0	15.5	-9.8	4.0	19		
Average weekly overtime per employee	hours	Aug. qtr 95	1.0	-11.1	-10.3	1.1	-8.4	-14.8	..	19		
Industrial disputes	'000 working days lost	Aug. 95	0.1	-90.7	218.8	43.3	20.7	12.6	0.2	20		
Short-term overseas visitors arrivals												
	No.	Sep. 95	5,092	1.8	8.2	254,318	-16.6	0.1	2.0	21		
Short-term resident departures												
	No.	Sep.95	10,254	1.8	0.4	268,569	36.0	11.2	3.8	21		
<b>Incomes</b>												
Average weekly earnings (full-time adults; ordinary time)												
Original	\$	Aug. qtr 95	613.80	0.3	1.9	651.90	0.7	5.1	..	22		
Trend	\$	Aug. qtr 95	616.50	0.3	2.6	654.20	1.3	5.1	..	22		
Award rates of pay index (full-time adults, weekly)	Jun.1985=100	Oct. 95	146.7	0.0	1.6	144.5	0.0	1.5	..	23		
<b>Financial markets</b>												
Secured housing finance	\$m	Oct. 95	269.2	3.5	6.0	3,905.4	3.5	6.7	6.9	24		
Finance commitments												
Personal	\$m	Oct. 95	187.6	2.8	14.7	2,802.2	13.1	32.7	6.7	25		
Commercial	\$m	Oct. 95	449.7	6.7	7.7	9,588.2	-11.3	42.7	4.7	25		
Lease	\$m	Oct. 95	18.8	3.3	-8.5	536.5	-5.4	12.3	3.5	25		
Interest rates												
Banks new housing loans (a)	%	Nov. 95	..	..	..	10.50	0.0	0.9	..	26		
Small overdraft rate (a)												
Minimum	%	Nov. 95	..	..	..	10.90	0.0	0.4	..	26		
Maximum	%	Nov. 98	..	..	..	11.25	0.0	1.4	..	26		

(a) Change is shown in terms of percentage points.

## FOCUS

### Grape Growing and Wine Production in South Australia 1994-95

During 1994-95, South Australia produced 43% of Australian grapes and 51% of Australian beverage wine. These proportions are well above the South Australian contribution to the Australian population total (8%) and many economic indicators (see Statistical Summary on page 16).

#### VITICULTURE

South Australia had the largest total area of vines in Australia with 32,358 hectares. Australia had a record 72,707 hectares of grape vines, which included 5,975 hectares of vines planted or grafted during 1994-95. Nearly 52% of the area of these newly planted vines was in South Australia.

AREA AND PRODUCTION OF VINEYARDS,  
SOUTH AUSTRALIA, 1994-95

	Red grapes	White grapes	Total	SA as a % of Australia
	hectares	hectares	hectares	%
<b>Area of vines at harvest</b>				
Bearing	13,017	13,980	26,998	43
Not bearing				
Planted or grafted prior to 1994-95	1,325	946	2,271	51
Planted or grafted during 1994-95	1,957	1,133	3,090	52
<b>Total</b>	<b>16,299</b>	<b>16,058</b>	<b>32,358</b>	<b>45</b>
<b>Grape production</b>	tonnes	tonnes	tonnes	%
Winemaking	134,464	182,768	317,232	55
Drying	3,641	3,063	6,704	5
Table and other	709	2,204	2,913	7
<b>Total</b>	<b>138,814</b>	<b>188,035</b>	<b>326,849</b>	<b>43</b>

Despite grape production falling by 7%, South Australia became the largest producer of grapes, followed by Victoria. Australia produced 575,001 tonnes of grapes intended for winemaking, 147,406 tonnes for drying and 44,515 tonnes for table and other uses. Most (97%) of the South Australian grape production were intended for winemaking. South Australia produced 55% of the total grapes intended for winemaking.

South Australia produced 70% of Australian red wine grapes mostly in the South Eastern, North Murray and Central Districts.

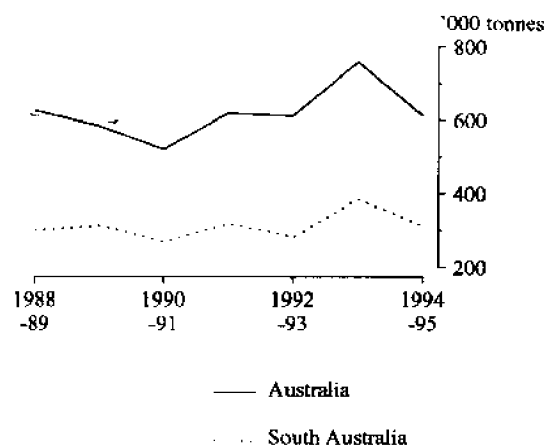
#### WINE PRODUCTION

The ABS collects statistics on grapes crushed, wine production, spirit production and usage from winemaking enterprises which crush more than 400 tonnes of grapes. This accounts for approximately 97% of all grape crushings.

#### Grapes Crushed

The South Australian crush decreased by 18%, from 384,666 tonnes in 1993-94 to 313,771 tonnes in 1994-95. Of these grapes, 62% were white. South Australia crushed 63% of all red grapes crushed in Australia and 46% of white grapes.

FRESH GRAPES CRUSHED  
South Australia and Australia



Each of the major wine producing areas reported decreases in the quantity of grapes crushed as follows:

GRAPES CRUSHED, REGIONS,  
SOUTH AUSTRALIA, 1994-95

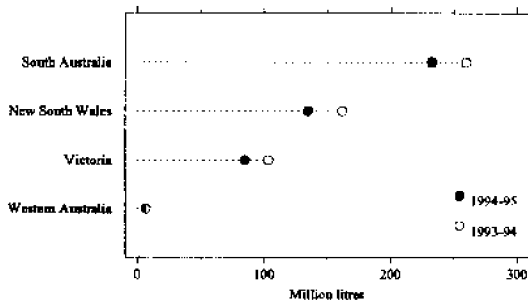
Region	Grapes crushed tonnes	Change from 1993-94 %
Adelaide Statistical Division and Fleurieu Subdivision	31,876	-10.4
Barossa Subdivision	99,628	-25.1
Riverland Subdivision	137,031	-15.6
Lower North Subdivision	9,196	-6.3
South East Subdivision	36,040	-17.8
<b>Total South Australia</b>	<b>313,771</b>	<b>-18.4</b>

#### Beverage Wine

The production of beverage wine in South Australia was 232.3 million litres, a decrease of 27.4 million litres (11%) from the 1993-94 record of 259.7 million litres. Fortified wine production decreased by 5.4 million litres (27%) to 14.8 million litres, and production of unfortified wine decreased by 22.0 million litres (9%) to 217.5 million litres.



## BEVERAGE WINE PRODUCTION States



Despite the drop in production South Australia remained the major beverage wine producer of the States and Territories with 51% of the Australian total. The production of beverage wine in Australia decreased by 14% from a record volume of 530.5 million litres in 1993-94 to 458.4 million litres. The fall in production was greatly influenced by a poor grape harvest resulting in a shortage of grapes for winemakers.

All South Australian wine producing regions except the Riverland reported decreases in the production of beverage wine for 1994-95. The following table shows the regional production for 1994-95 and the percentage change on 1993-94.

### BEVERAGE WINE PRODUCTION, REGIONS, SOUTH AUSTRALIA, 1994-95

Region	Wine prod'n '000 litres	Change from 1993-94 %
Adelaide Statistical Division and Fleurieu Subdivision	24,202	-19.8
Barossa Subdivision	101,276	-16.5
Riverland Subdivision	80,949	7.5
Lower North Subdivision	6,255	)
South East Subdivision	19,604	) -21.3
<b>Total South Australia</b>	<b>232,287</b>	<b>-10.5</b>

### Distillation Wine and Spirits

The production of distillation wine in South Australia was 32.7 million litres, a decrease of 21% or 8.8 million litres from the previous year. This compares with a decrease of 22% for the total Australian distillation wine production, from 56.8 million litres in 1993-94 to 44.4 million litres in 1994-95.

Brandy production for Australia in 1994-95 fell by 29% to 1.0 million litres of alcohol, the lowest since 1988-89. Grape spirit production fell by 21% to 4.9 million litres of alcohol. South Australia was the main producer of both these products with 90% (0.9 million litres of alcohol) of all brandy made and over two-thirds of all grape spirit made.

## WINE STOCKS

Data relating to the level of stocks of wine and brandy are separately collected from winemaking enterprises who have domestic sales of wine greater than 250,000 litres in the past financial year. Data are collected at the Australian level only.

Total beverage wine stocks held by winemakers in Australia at 30 June 1995 were 642.5 million litres, a decrease of 2% when compared with the record stocks at 30 June 1994.

## DOMESTIC SALES

Data relating to domestic sales of Australian produced wine are collected from winemaking enterprises who have domestic sales greater than 250,000 litres in the past financial year. Data are collected at the Australian level only.

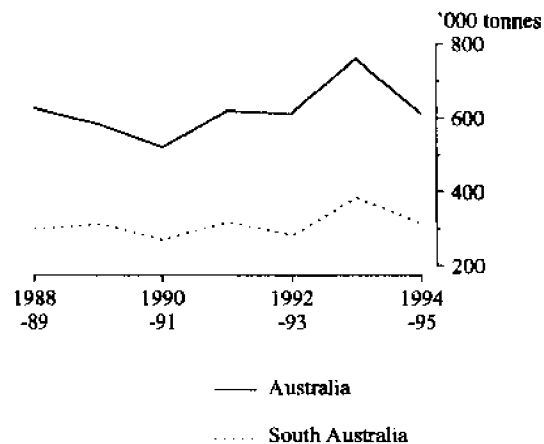
In 1994-95, reported sales were 313.4 million litres of Australian produced wine, a decrease of 2% from the previous year, and 1,188 litres of alcohol in Australian produced brandy.

## EXPORTS

South Australia exported 82.8 million litres of wine, a fall of 5% from the record 87.4 million litres recorded for 1993-94. However, the value of wine exported increased. It reached a record high of \$250.5 million in 1994-95, up 5% from 1993-94.

### WINE EXPORTS

South Australia and Australia



Australian wine exports fell 9% in volume to 113.6 million litres and rose 5% in value to \$385.4 million. South Australia continues to be the predominant source of Australian wine exports representing 73% of the total volume for 1994-95.

The United Kingdom and New Zealand are the main markets for South Australian and Australian wine.

The following table shows the countries of destination of South Australian wine.

WINE EXPORTS FROM SOUTH AUSTRALIA BY COUNTRY OF DESTINATION, 1994-95

Country	'000 Litres	\$'000
United Kingdom	38,949	131,270
New Zealand	12,698	21,952
United States of America	7,023	29,572
Sweden	5,903	11,976
Canada	4,073	13,639
Ireland	1,681	4,554
Japan	1,459	4,168
Other Countries	11,036	33,396
<b>All Countries</b>	<b>82,823</b>	<b>250,527</b>

#### Further Reference

Most of the information in this article has been extracted from the ABS publication *Australian Wine and Grape Industry, 1995* (1329.0), which is available from ABS Bookshops in all capital cities.

Further information is also available in *Sales of Australian Wine and Brandy by Winemakers* (8504.0) issued monthly. This publication contains details of domestic sales by wine type and container type, import data by wine type and export data by country of destination and wine type.

Viticulture data by variety and region and other unpublished data are available on request. Please telephone Peter Carmalt on (08) 237 7632.

# PC AUSSTATS

## Online access to the latest statistical information from the ABS

### The most accessible statistics in Australia . . .

With PC AUSSTATS, getting access to ABS information has never been easier.

### Online, all the time . . .

You'll never be without vital information again. PC AUSSTATS will let you access the information you need, when you need it — 24 hours a day, 7 days a week.

You can connect to the ABS database and find the information you want, simply and quickly. And once you've selected the information, downloading to your PC is done for you by the PC AUSSTATS software.

### Ready to go . . .

Once downloaded, the data is in .wks format — compatible with all the most common spreadsheet packages available today — so it's ready for instant analysis and manipulation on your own PC.

And with thousands of series covering the most important economic and social data, it's like having your own private ABS library — with librarian.

### With the latest information . . .

By using PC AUSSTATS, you will know that you have the latest information available.

The main PC AUSSTATS database is updated daily, giving you full access to the latest facts and figures about the nation.

Plus, you don't have to worry about revisions or corrections to the data — the PC AUSSTATS database is updated in line with any revisions to our printed publications.

### . . . and a historical perspective

The database that you access with PC AUSSTATS gives you time series data.

So you get not only the latest information, but also a historical perspective — and this gives you the base you need to perform your own trend analysis.

Historical information is typically available for a 15 year period for all series on PC AUSSTATS — and this includes monthly, quarterly, half yearly and yearly series.

### Arrange a demonstration today . . .

For a demonstration of this powerful new information resource, call  
Graham Duncan on (08) 237 7609.

# TIME SERIES

## STATE ACCOUNTS AT CURRENT PRICES South Australia

Period	Final consumption expenditure		Gross fixed capital expenditure		State final demand	Gross State product (I)	Wages, salaries and supplements
	Private	Public	Private	Public			
ANNUAL (\$ million)							
1984-85	10,502	3,501	3,048	1,047	18,098	17,372	9,193
1985-86	11,564	3,858	3,162	1,266	19,850	19,343	9,990
1986-87	12,451	4,200	3,255	1,286	21,192	20,657	10,654
1987-88	13,730	4,389	3,964	1,194	23,277	22,863	11,269
1988-89	15,232	4,646	4,149	1,425	25,452	25,567	12,591
1989-90	16,485	5,000	4,489	1,574	27,548	28,020	14,009
1990-91	18,097	5,474	4,228	1,503	29,302	28,321	14,776
1991-92	18,946	5,827	3,999	1,372	30,144	28,861	14,756
1992-93	19,442	6,049	3,953	1,336	30,780	30,289	15,264
1993-94	20,191	6,724	3,958	1,129	32,002	32,176	16,102
1994-95	21,613	6,614	4,964	1,205	34,396	33,782	16,533
PERCENTAGE CHANGE FROM PREVIOUS YEAR							
1985-86	10.1	10.2	3.7	20.9	9.7	11.3	8.7
1986-87	7.7	8.9	2.9	1.6	6.8	6.8	6.6
1987-88	10.3	4.5	21.8	-7.2	9.8	10.7	5.8
1988-89	10.9	5.9	4.7	19.3	9.3	11.8	11.7
1989-90	8.2	7.6	8.2	10.5	8.2	9.6	11.3
1990-91	9.8	9.5	-5.8	-4.5	6.4	1.1	5.5
1991-92	4.7	6.4	-5.4	-8.7	2.9	1.9	-0.1
1992-93	2.6	3.8	-1.2	-2.6	2.1	4.9	3.4
1993-94	3.9	11.2	0.1	-15.5	4.0	6.2	5.5
1994-95	7.0	-1.6	25.4	6.7	7.5	5.0	2.7
QUARTERLY, ORIGINAL (\$ million)							
1992 - 93 -							
March	4,679	1,441	925	298	7,343	7,585	3,682
June	4,838	1,563	1,033	429	7,863	7,557	3,905
1993 - 94 -							
September	4,989	1,629	1,000	238	7,856	7,792	4,034
December	5,331	1,624	1,046	285	8,286	8,469	4,071
March	4,895	1,481	958	234	7,568	7,841	3,891
June	5,011	1,986	1,059	333	8,389	8,051	4,162
1994 - 95 -							
September	5,282	1,620	1,151	240	8,293	8,217	4,081
December	5,617	1,655	1,565	261	9,098	8,972	4,238
March	5,251	1,477	1,091	321	8,140	8,145	3,998
June	5,463	1,862	1,157	383	8,865	8,448	4,216
QUARTERLY, TREND (\$ million)							
1992 - 93 -							
March	4,888	1,514	1,009	342	7,753	7,674	3,850
June	4,937	1,545	1,010	326	7,818	7,814	3,917
1993 - 94 -							
September	4,996	1,567	1,003	298	7,864	7,890	3,962
December	5,044	1,619	1,002	277	7,942	7,957	3,998
March	5,092	1,677	1,000	274	8,043	8,066	4,034
June	5,160	1,717	1,085	265	8,227	8,212	4,077
1994 - 95 -							
September	5,242	1,695	1,224	271	8,432	8,319	4,107
December	5,348	1,646	1,291	298	8,583	8,384	4,122
March	5,463	1,634	1,258	326	8,681	8,475	4,145
June	5,583	1,679	1,171	337	8,770	8,599	4,172
PERCENTAGE CHANGE FROM PREVIOUS QUARTER, TREND							
1992 - 93 -							
June	1.0	2.0	0.1	-4.7	0.8	1.8	1.7
1993 - 94 -							
September	1.2	1.4	-0.7	-8.6	0.6	1.0	1.1
December	1.0	3.3	-0.1	-7.0	1.0	0.8	0.9
March	1.0	3.6	-0.2	-1.1	1.3	1.4	0.9
June	1.3	2.4	8.5	-3.3	2.3	1.8	1.1
1994 - 95 -							
September	1.6	-1.3	12.8	2.3	2.5	1.3	0.7
December	2.0	-2.9	5.5	10.0	1.8	0.8	0.4
March	2.2	-0.7	-2.6	9.4	1.1	1.1	0.6
June	2.2	2.8	-6.9	3.4	1.0	1.5	0.7

**STATE ACCOUNTS AT AVERAGE 1989-90 PRICES**  
**South Australia**

Period	Final consumption expenditure		Gross fixed capital expenditure		State final demand	Gross State product (f)
	Private	Public	Private	Public		
ANNUAL (\$ million)						
1984-85	14,709	4,498	4,112	1,339	24,658	23,344
1985-86	14,973	4,888	3,850	1,504	25,015	25,011
1986-87	14,933	4,851	3,622	1,437	24,843	25,320
1987-88	15,431	4,877	4,243	1,303	25,854	26,005
1988-89	16,067	4,874	4,281	1,495	26,717	26,777
1989-90	16,485	5,000	4,489	1,574	27,548	28,020
1990-91	17,147	5,212	4,090	1,453	27,902	27,604
1991-92	17,434	5,345	3,834	1,307	27,920	27,188
1992-93	17,451	5,460	3,669	1,251	27,831	28,247
1993-94	17,856	5,752	3,704	1,052	28,242	29,173
1994-95	18,790	5,718	4,531	1,131	30,170	29,492
PERCENTAGE CHANGE FROM PREVIOUS YEAR						
1985-86	1.8	4.2	-6.4	12.3	1.4	7.1
1986-87	-0.3	3.5	-5.9	-4.5	-0.7	1.2
1987-88	3.3	0.5	17.1	-9.3	4.1	2.7
1988-89	4.1	-0.1	0.9	14.7	3.3	3.0
1989-90	2.6	2.6	4.9	5.3	3.1	4.6
1990-91	4.0	4.2	-8.9	-7.7	1.3	-1.5
1991-92	1.7	2.6	-6.3	-10.0	0.1	-1.5
1992-93	0.1	2.2	-4.3	-4.3	-0.3	3.9
1993-94	2.3	5.3	1.0	-15.9	1.5	3.3
1994-95	5.2	-0.6	22.3	7.5	6.8	1.1
QUARTERLY, ORIGINAL (\$ million)						
1992 - 93 -						
March	4,180	1,308	850	281	6,619	7,069
June	4,310	1,420	947	404	7,081	6,984
1993 - 94 -						
September	4,423	1,402	923	223	6,971	7,103
December	4,709	1,386	956	266	7,317	7,908
March	4,319	1,311	868	224	6,722	7,070
June	4,405	1,653	957	313	7,328	7,081
1994 - 95 -						
September	4,623	1,406	1,047	226	7,302	7,189
December	4,903	1,409	1,453	248	8,013	7,954
March	4,543	1,306	986	300	7,135	7,022
June	4,721	1,597	1,045	357	7,720	7,327
QUARTERLY, TREND (\$ million)						
1992 - 93 -						
March	4,377	1,363	928	322	6,990	7,139
June	4,397	1,373	928	306	7,004	7,249
1993 - 94 -						
September	4,432	1,375	921	280	7,008	7,286
December	4,462	1,403	917	261	7,043	7,276
March	4,494	1,441	908	258	7,101	7,280
June	4,539	1,465	985	252	7,241	7,309
1994 - 95 -						
September	4,592	1,448	1,119	256	7,415	7,308
December	4,661	1,419	1,183	281	7,544	7,310
March	4,744	1,419	1,147	306	7,616	7,365
June	4,819	1,456	1,060	315	7,650	7,462
PERCENTAGE CHANGE FROM PREVIOUS QUARTER, TREND						
1992 - 93 -						
June	0.5	0.7	0.0	-5.0	0.2	1.5
1993 - 94 -						
September	0.8	0.1	-0.8	-8.5	0.1	0.5
December	0.7	2.0	-0.4	-6.8	0.5	-0.1
March	0.7	2.7	-1.0	-1.1	0.8	0.1
June	1.0	1.7	8.5	-2.3	2.0	0.4
1994 - 95 -						
September	1.2	-1.2	13.6	1.6	2.4	0.0
December	1.5	-2.0	5.7	9.8	1.7	0.0
March	1.8	0.0	-3.0	8.9	1.0	0.8
June	1.6	2.6	-7.6	2.9	0.4	1.3

**MERCHANDISE EXPORTS BY SELECTED COMMODITY GROUP**  
**Final Production in South Australia**  
**(\$'000)**

Period	Meat and meat preparations	Cereals and cereal preparations	Wine	Wool and sheepskins	Machinery	Metals and metal manu- factures	Fish and crustaceans	Road vehicles, parts and accessories	Petroleum and petroleum products	Total
1988-89	181,058	475,481	71,474	415,098	104,163	239,656	95,720	124,815	189,679	2,451,372
1989-90	244,374	724,369	73,484	285,650	111,944	371,136	111,760	161,704	188,105	2,828,091
1990-91	234,299	587,199	123,567	257,576	152,940	433,341	122,604	117,218	291,507	3,007,137
1991-92	270,237	565,582	165,914	351,096	176,536	489,030	147,532	137,091	341,477	3,431,139
1992-93	282,181	573,375	192,255	318,989	211,426	490,594	154,608	338,359	372,445	3,760,602
1993-94	324,796	436,517	238,366	290,963	223,760	462,353	186,861	351,229	276,473	3,889,781
1994-95	307,752	261,052	250,527	301,645	284,777	571,007	191,351	332,301	285,310	3,825,650
MONTHLY										
1994 - 95 -										
August	16,427	20,282	22,287	16,510	18,605	43,510	9,563	29,613	26,352	298,093
September	24,651	35,756	29,230	22,493	19,707	45,405	7,706	27,442	39,196	339,143
October	28,580	27,555	29,550	26,817	23,286	32,446	23,210	26,883	23,289	369,985
November	31,665	21,898	15,734	38,562	24,838	39,758	20,372	35,507	28,000	341,288
December	26,513	12,077	14,206	30,424	25,825	45,363	14,894	29,565	13,200	282,784
January	23,308	21,427	12,219	24,480	11,978	66,785	14,201	17,398	29,049	295,855
February	28,109	8,880	17,151	24,988	18,626	32,546	13,945	23,963	11,731	240,897
March	28,257	23,436	23,383	25,726	31,796	70,383	17,167	25,389	33,727	390,919
April	31,720	11,594	25,366	26,052	27,582	63,128	18,015	25,059	21,635	322,346
May	28,703	17,053	21,053	23,984	29,149	67,729	24,111	32,752	11,789	341,872
June	22,966	36,945	22,353	20,141	32,022	35,721	13,305	30,463	38,853	327,352
1995 - 96 -										
July	14,861	31,637	25,473	21,640	29,748	30,070	20,641	23,867	14,477	302,072
August	12,941	13,343	25,103	9,169	32,561	56,821	14,318	24,547	24,036	327,546
September	19,408	15,544	36,550	17,633	22,258	53,275	11,703	20,926	27,728	297,042
October	23,200	24,854	27,871	25,949	24,075	51,941	18,771	21,146	12,409	298,527

**MERCHANDISE EXPORTS BY SELECTED COUNTRIES**  
**Final Production in South Australia**  
**(\$'000)**

Period	European Community Total				New Zealand	East Asia				Total East Asia
	United States	Middle East	United Kingdom	European Community		Japan	China	Hong Kong	ASEAN	
ANNUAL										
1988-89	184,903	397,324	108,635	355,669	230,263	390,207	51,975	55,474	240,507	869,226
1989-90	229,169	551,953	121,319	412,855	289,970	359,643	86,303	49,273	277,659	929,209
1990-91	321,032	325,450	186,353	480,714	179,193	438,970	146,434	80,640	403,754	1,284,576
1991-92	300,139	381,761	220,048	550,258	214,522	647,674	148,308	108,583	437,670	1,627,108
1992-93	352,764	314,049	237,520	594,701	288,421	649,684	208,135	171,803	487,174	1,820,065
1993-94	393,611	280,499	263,092	571,047	311,999	625,481	220,211	165,163	533,976	1,898,974
1994-95	328,674	183,966	245,982	552,570	376,235	682,428	177,869	192,824	550,929	2,002,692
MONTHLY										
1994 - 95 -										
August	25,708	19,773	19,270	47,081	29,886	54,952	20,681	13,367	42,606	149,060
September	25,319	25,907	29,253	56,126	29,220	41,864	17,432	11,876	60,961	163,472
October	29,113	15,689	47,808	75,430	34,531	78,846	17,467	16,293	34,247	179,512
November	33,212	9,184	11,258	32,846	35,786	65,565	14,078	17,070	64,652	195,315
December	23,218	13,049	12,257	41,216	29,641	47,557	11,591	18,008	31,820	145,527
January	20,881	13,813	11,643	37,380	31,359	42,080	13,616	17,019	61,500	167,201
February	22,034	13,923	12,754	29,425	20,292	46,787	13,609	13,980	21,003	130,185
March	35,778	19,072	29,706	67,325	33,970	66,502	18,388	22,749	59,360	197,034
April	25,323	9,691	25,298	45,103	29,173	45,373	13,286	15,270	58,048	178,331
May	26,186	3,626	16,146	54,213	34,686	76,181	13,535	13,475	39,377	193,971
June	25,373	25,224	17,063	40,540	28,086	66,461	13,411	18,897	52,159	179,635
1995 - 96 -										
July	31,409	28,887	20,326	40,120	32,656	50,889	18,583	17,047	35,701	142,994
August	22,553	4,952	30,566	62,811	33,569	63,571	9,536	13,463	59,321	166,636
September	22,885	8,516	25,117	62,098	38,393	53,748	10,067	8,889	30,822	132,990
October	19,304	14,636	22,807	56,042	29,689	51,286	22,017	12,373	52,142	156,307

**MERCHANDISE EXPORTS BY INDUSTRY OF ORIGIN**  
**Final Production in South Australia**  
**(\$'000)**

Period	Agriculture, forestry and fishing	Mining	Food, beverages and tobacco	Manufacturing				Other/ Confidential	Total
				Petroleum, coal, chemical associated product	Metal product	Machinery and equipment	Other		
ANNUAL									
1988-89	891,978	107,269	515,739	176,037	260,978	270,215	96,203	132,953	2,451,372
1989-90	979,463	133,318	583,544	133,078	406,144	320,349	99,984	172,210	2,828,091
1990-91	804,154	120,930	599,030	264,813	474,541	336,500	155,351	251,818	3,007,137
1991-92	882,011	248,846	702,148	201,681	541,522	381,737	178,485	294,709	3,431,139
1992-93	883,725	294,586	766,518	195,387	509,303	641,930	178,726	290,427	3,760,602
1993-94	732,333	245,247	885,418	180,147	475,059	665,066	208,573	497,938	3,889,781
1994-95	605,626	268,537	867,314	190,993	585,457	707,833	243,545	356,344	3,825,650
MONTHLY									
1994 - 95 -									
August	37,559	29,932	56,729	12,164	44,556	55,638	24,020	37,495	298,093
September	58,185	31,213	74,115	17,568	46,256	53,639	17,245	40,922	339,143
October	56,671	23,054	89,131	18,064	33,327	59,284	24,600	65,853	369,985
November	67,178	32,605	75,017	13,817	39,788	70,264	21,677	20,941	341,288
December	46,049	9,123	60,572	14,901	46,285	62,210	18,477	25,169	282,784
January	51,212	36,405	54,240	13,045	68,087	35,775	15,676	21,417	295,855
February	42,169	7,526	64,671	12,493	33,937	49,457	17,229	13,414	240,897
March	54,709	42,788	73,102	13,883	72,673	63,808	19,138	50,818	390,919
April	40,118	5,790	96,617	23,886	64,456	58,984	19,623	12,872	322,346
May	36,369	19,086	84,923	15,326	68,855	70,703	21,326	25,283	341,872
June	56,778	29,420	75,673	18,667	36,471	70,652	23,269	16,424	327,352
1995 - 96 -									
July	65,513	7,842	76,349	18,016	30,959	60,149	18,201	25,044	302,072
August	35,995	32,386	64,524	10,332	57,359	63,274	19,773	43,903	327,546
September	35,077	21,759	84,686	16,456	54,471	49,144	18,514	16,935	297,042
October	51,193	9,147	83,859	12,102	53,070	52,337	16,941	19,878	298,527

**MERCHANDISE IMPORTS BY SELECTED COMMODITY GROUP**  
**State of Final Destination South Australia**  
**(\$'000)**

Period	Food, beverages and tobacco	Petroleum and petroleum products	Chemicals	Textiles	Metals and metal manu- factures	Machinery	Road vehicles, parts and accessories	Other manu- factured goods	Total
ANNUAL									
1988-89	60,395	169,397	144,766	47,592	135,225	411,092	415,120	344,344	1,861,622
1989-90	71,796	203,654	167,154	49,249	147,969	462,885	414,800	399,437	2,050,024
1990-91	78,926	425,262	140,894	49,087	135,772	515,226	372,603	366,304	2,193,851
1991-92	82,095	362,777	153,574	62,884	151,165	523,848	435,121	513,012	2,396,954
1992-93	91,756	570,334	186,001	57,434	255,924	609,212	661,714	521,723	3,068,122
1993-94	99,177	404,626	200,225	60,172	160,937	595,238	663,617	484,590	2,803,446
1994-95	115,930	330,430	220,536	64,524	214,430	695,165	749,663	563,368	3,099,641
MONTHLY									
1994 - 95 -									
August	7,771	43,158	10,385	5,394	17,333	55,586	70,264	52,102	279,021
September	8,482	20,570	19,869	4,380	15,442	54,068	60,834	37,758	231,418
October	14,848	19,447	11,040	5,653	13,849	56,688	90,244	48,815	269,859
November	12,383	107	15,461	6,952	20,622	56,130	63,462	51,455	240,036
December	9,690	23,355	10,711	3,751	12,863	57,066	51,639	41,335	220,745
January	10,692	39,273	19,760	4,208	12,259	63,883	49,403	48,817	260,849
February	7,889	50,628	17,349	3,931	17,541	53,842	47,177	41,089	251,362
March	8,852	20,952	27,665	6,766	24,054	76,648	63,870	54,293	296,240
April	7,487	25,235	14,810	5,534	18,432	51,589	67,894	48,424	252,672
May	11,288	25,162	33,903	5,641	22,360	52,820	58,222	44,756	267,552
June	8,327	24,353	24,351	5,639	28,339	63,840	57,414	50,150	275,585
1995 - 96 -									
July	9,188	51,035	22,738	7,385	16,289	58,121	53,294	47,464	286,596
August	9,606	23,010	29,079	7,480	24,255	67,838	57,785	67,302	299,790
September	10,407	21,085	12,302	7,163	18,139	45,310	39,882	42,133	203,926
October	10,868	21,481	13,977	6,533	18,179	49,954	62,364	61,449	257,275

**TURNOVER OF RETAIL ESTABLISHMENTS BY INDUSTRY**  
**South Australia**

Period	Food retailing	Department stores	Clothing and soft good retailing	Household good retailing	Recreational good retailing	Other retailing	Hospitality and services	Total
ANNUAL (\$ million)								
1985-86	2,086.1	833.3	404.8	607.6	226.0	312.4	938.0	5,408.2
1986-87	2,240.3	893.8	396.8	578.3	229.7	332.3	989.5	5,660.7
1987-88	2,378.5	951.2	416.7	634.5	237.5	367.0	1,082.7	6,068.1
1988-89	2,534.9	971.8	462.2	695.8	268.5	420.7	1,178.7	6,532.6
1989-90	2,679.8	1,041.1	521.1	739.5	291.6	467.1	1,212.9	6,953.1
1990-91	2,978.2	1,069.0	543.9	738.1	303.9	497.7	1,312.6	7,443.4
1991-92	3,163.1	1,087.4	466.5	758.8	278.7	515.7	1,370.6	7,640.8
1992-93	3,018.5	1,101.5	434.2	783.3	311.2	617.4	1,244.7	7,510.8
1993-94	3,152.3	1,107.8	466.1	849.2	354.9	639.6	1,277.8	7,847.7
1994-95	3,360.7	1,128.7	524.0	881.1	359.0	737.8	1,562.3	8,553.6
MONTHLY, ORIGINAL (\$ million)								
1994 - 95 -								
August	262.4	84.6	37.7	69.1	26.7	57.6	111.9	650.0
September	266.5	87.4	41.3	67.6	26.0	60.3	121.3	670.4
October	275.6	93.3	43.6	73.2	28.2	59.1	127.4	700.4
November	276.9	103.5	43.6	78.0	30.5	63.0	128.0	723.5
December	332.5	175.2	64.0	88.7	45.7	81.4	154.5	942.0
January	275.2	74.0	40.1	72.0	28.9	55.5	137.1	682.8
February	263.4	68.6	34.7	63.5	27.3	54.6	127.7	639.8
March	292.2	85.7	43.1	71.7	29.9	62.0	137.7	722.3
April	282.8	91.0	47.6	70.2	29.5	60.9	140.8	722.8
May	286.6	94.8	46.4	78.4	30.6	64.7	133.9	735.4
June	282.3	86.8	43.4	80.1	28.3	64.4	132.0	717.3
1995 - 96 -								
July	282.3	92.0	41.9	80.2	29.4	65.0	138.9	729.6
August	297.8	86.9	42.7	78.6	30.2	69.9	138.7	744.8
September	301.0	84.0	40.8	72.4	31.0	72.9	145.4	747.5
October	305.4	92.0	45.4	81.4	32.3	70.1	147.4	774.0
MONTHLY, TREND (\$ million)								
1994 - 95 -								
September	272.4	94.1	41.7	70.9	28.7	58.9	120.8	687.6
October	275.0	93.6	43.0	70.9	29.3	59.3	123.0	694.1
November	277.0	93.1	44.3	70.9	29.7	59.4	124.9	699.3
December	278.9	92.9	45.2	71.2	30.0	59.9	127.0	705.1
January	281.0	93.0	45.6	72.0	30.2	60.7	129.8	712.4
February	283.2	93.5	45.6	73.3	30.3	62.1	133.5	721.4
March	285.1	94.3	45.2	75.3	30.4	63.6	137.6	731.4
April	287.1	95.2	44.6	77.5	30.5	65.2	141.6	741.7
May	289.6	95.7	44.0	79.3	30.9	66.7	144.6	750.8
June	292.8	95.7	43.6	80.2	31.3	68.1	146.7	758.4
1995 - 96 -								
July	296.6	95.4	43.4	80.3	31.6	69.3	147.8	764.4
August	300.5	94.9	43.3	80.0	32.0	70.4	148.1	769.2
September	304.1	94.4	43.3	79.4	32.4	71.3	148.0	772.9
October	306.9	94.2	43.4	78.6	32.7	72.0	147.1	774.9
PERCENTAGE CHANGE FROM PREVIOUS MONTH, TREND								
1994 - 95 -								
October	1.0	-0.5	3.1	0.0	2.1	0.7	1.8	0.9
November	0.7	-0.5	3.0	0.0	1.4	0.2	1.5	0.7
December	0.7	-0.2	2.0	0.4	1.0	0.8	1.7	0.8
January	0.8	0.1	0.9	1.1	0.7	1.3	2.2	1.0
February	0.8	0.5	0.0	1.8	0.3	2.3	2.9	1.3
March	0.7	0.9	-0.9	2.7	0.3	2.4	3.1	1.4
April	0.7	1.0	-1.3	2.9	0.3	2.5	2.9	1.4
May	0.9	0.5	-1.3	2.3	1.3	2.3	2.1	1.2
June	1.1	0.0	-0.9	1.1	1.3	2.1	1.5	1.0
1995 - 96 -								
July	1.3	-0.3	-0.5	0.1	1.0	1.8	0.7	0.8
August	1.3	-0.5	-0.2	-0.4	1.3	1.6	0.2	0.6
September	1.2	-0.5	0.0	-0.7	1.3	1.3	-0.1	0.5
October	0.9	-0.2	0.2	-1.0	0.9	1.0	-0.6	0.3



**NEW MOTOR VEHICLE REGISTRATIONS BY TYPE OF VEHICLE**  
**South Australia**

Period	Original			Seasonally adjusted			Trend estimate		
	Cars and station wagons	Other vehicles	Total	Cars and station wagons	Other vehicles	Total	Cars and station wagons	Other vehicles	Total
<b>ANNUAL</b>									
1983-84	41,204	9,769	50,973	..	..	..	..	..	..
1984-85	45,809	11,795	57,604						
1985-86	40,840	9,620	50,460						
1986-87	29,788	6,430	36,218						
1987-88	29,915	5,775	35,690						
1988-89	31,920	6,816	38,736						
1989-90	35,211	7,808	43,019						
1990-91	34,753	6,619	41,372						
1991-92	32,351	5,333	37,684						
1992-93	32,894	5,577	38,471						
1993-94	32,806	5,781	38,587						
1994-95	35,830	6,736	42,566						
<b>PERCENTAGE CHANGE FROM PREVIOUS YEAR</b>									
1984-85	11.2	20.7	13.0	..	..	..	..	..	..
1985-86	-10.8	-18.4	-12.4						
1986-87	-27.1	-33.2	-28.2						
1987-88	0.4	-10.2	-1.5						
1988-89	6.7	18.0	8.5						
1989-90	10.3	14.6	11.1						
1990-91	-1.3	-15.2	-3.8						
1991-92	-6.9	-19.4	-8.9						
1992-93	1.7	4.6	2.1						
1993-94	-0.3	3.7	0.3						
1994-95	9.2	16.5	10.3						
<b>MONTHLY</b>									
1993 - 94 -									
June	3,196	826	4,022	2,951	696	3,648	2,788	567	3,354
1994 - 95 -									
July	2,870	523	3,393	2,902	527	3,428	2,803	558	3,362
August	2,869	513	3,382	2,686	522	3,208	2,820	540	3,360
September	3,140	479	3,619	2,904	489	3,393	2,841	523	3,364
October	2,883	488	3,371	2,797	502	3,300	2,874	515	3,389
November	3,144	589	3,733	2,891	518	3,410	2,913	520	3,433
December	2,941	549	3,490	2,914	545	3,459	2,962	533	3,495
January	2,436	440	2,876	3,177	596	3,773	3,026	553	3,579
February	2,863	502	3,365	3,105	532	3,637	3,075	571	3,646
March	3,333	692	4,025	3,045	587	3,632	3,104	585	3,690
April	2,335	451	2,786	2,786	544	3,331	3,107	594	3,702
May	3,647	695	4,342	3,558	644	4,201	3,080	594	3,674
June	3,369	815	4,184	3,115	683	3,798	3,038	583	3,622
1995 - 96 -									
July	2,546	446	2,992	2,567	455	3,022	2,994	564	3,558
August	3,444	519	3,963	3,189	542	3,731	2,951	538	3,489
September	2,905	547	3,452	2,765	561	3,326	2,916	511	3,427
October	3,217	427	3,644	2,985	431	3,416	2,894	487	3,381
<b>PERCENTAGE CHANGE FROM PREVIOUS MONTH</b>									
1994 - 95 -									
July	-10.2	-36.7	-15.6	-1.7	-24.3	-6.0	0.5	-1.6	0.2
August	0.0	-1.9	-0.3	-7.4	-0.9	-6.4	0.6	-3.2	-0.1
September	9.4	-6.6	7.0	8.1	-6.3	5.8	0.7	-3.1	0.1
October	-8.2	1.9	-6.9	-3.7	2.7	-2.7	1.2	-1.5	0.7
November	9.1	20.7	10.7	3.4	3.2	3.3	1.4	1.0	1.3
December	-6.5	-6.8	-6.5	0.8	5.2	1.4	1.7	2.5	1.8
January	-17.2	-19.9	-17.6	9.0	9.4	9.1	2.2	3.8	2.4
February	17.5	14.1	17.0	-2.3	-10.7	-3.6	1.6	3.3	1.9
March	16.4	37.8	19.6	-1.9	10.3	-0.1	0.9	2.5	1.2
April	-29.9	-34.8	-30.8	-8.5	-7.3	-8.3	0.1	1.5	0.3
May	56.2	54.1	55.9	27.7	18.4	26.1	-0.9	0.0	-0.8
June	-7.6	17.3	-3.6	-12.5	6.1	-9.6	-1.4	-1.9	-1.4
1995 - 96 -									
July	-24.4	-45.3	-28.5	-17.6	-33.4	-20.4	-1.4	-3.3	-1.8
August	35.3	16.4	32.5	24.2	19.1	23.5	-1.4	-4.6	-1.9
September	-15.7	5.4	-12.9	-13.3	3.5	-10.9	-1.2	-5.0	-1.8
October	10.7	-21.9	5.6	8.0	-23.2	2.7	-0.8	-4.7	-1.3

**ACTUAL PRIVATE NEW CAPITAL EXPENDITURE BY SELECTED INDUSTRY AND TYPE OF ASSET  
South Australia**

Period	Industry			Total	Type of asset	
	Mining	Manufacturing	Other selected industries		New buildings and structures	Equipment, plant and machinery
ANNUAL (\$ million)						
1990-91	122	742	988	1,852	628	1,224
1991-92	193	763	668	1,625	392	1,233
1992-93	218	564	739	1,522	416	1,105
1993-94	97	610	784	1,491	364	1,127
1994-95	129	781	1,161	2,072	382	1,689
PERCENTAGE CHANGE FROM PREVIOUS YEAR						
1991-92	58.4	2.9	-32.3	-12.2	-37.5	0.8
1992-93	12.8	-26.1	10.6	-6.4	6.1	-10.4
1993-94	-55.5	8.1	6.0	-2.0	-12.6	2.0
1994-95	32.7	28.1	48.1	39.0	5.0	49.9
QUARTERLY, ORIGINAL (\$ million)						
1992 - 93 - June	49	147	143	340	57	283
1993 - 94 - September	37	135	187	359	94	265
December	28	136	187	351	75	277
March	10	135	230	375	125	251
June	22	204	180	406	71	335
1994 - 95 - September	19	130	326	475	152	323
December	44	221	370	636	79	557
March	28	204	225	457	75	381
June	38	226	240	504	77	427
PERCENTAGE CHANGE FROM PREVIOUS QUARTER, ORIGINAL						
1993 - 94 - September	-25.1	-8.5	30.6	5.6	64.9	-6.4
December	-24.6	1.2	0.1	-2.1	-20.5	4.5
March	-64.2	-1.0	23.0	6.8	66.7	-9.4
June	123.0	51.1	-21.9	8.2	-43.4	33.8
1994 - 95 - September	-17.0	-36.0	81.6	17.1	115.3	-3.7
December	140.0	69.8	13.3	33.7	-48.2	72.4
March	-36.9	-7.9	-39.2	-28.2	-4.7	-31.6
June	35.7	10.8	6.7	10.4	2.7	12.1
QUARTERLY, TREND (\$ million)						
1992 - 93 - June	n.a.	n.a.	n.a.	368	90	278
1993 - 94 - September				352	81	271
December				351	83	268
March				368	97	271
June				426	112	314
1994 - 95 - September				505	112	393
December				536	95	441
March				522	81	441
June				487	76	411
PERCENTAGE CHANGE FROM PREVIOUS QUARTER, TREND						
1993 - 94 - September	..	..	..	-4.5	-10.9	-2.4
December				-0.2	2.9	-1.1
March				4.8	17.5	0.9
June				15.8	14.7	16.0
1994 - 95 - September				18.5	0.5	25.2
December				6.1	-15.3	12.2
March				-2.6	-14.7	0.0
June				-6.7	-6.2	-6.8

**TOURIST ACCOMMODATION**  
**South Australia**

Period	Hotels, motels, guest houses with facilities			Holiday flats, units and houses			Short-term caravan parks		
	Number of guest rooms	Room occupancy (per cent)	Takings (\$'000)	Number of flats, units and houses	Unit occupancy (per cent)	Takings (\$'000)	Number of sites	Site occupancy (per cent)	Takings (\$'000)
<b>ANNUAL</b>									
1986-87	8,497	52.9	79,254	n.a.	n.a.	n.a.	18,773	18.1	12,647
1987-88	9,156	50.8	89,321	1,105	45.4	8,109	18,926	17.8	13,248
1988-89	9,396	50.5	102,737	1,171	45.8	9,792	19,195	17.4	14,711
1989-90	10,316	52.0	121,788	1,113	48.4	11,381	19,847	18.4	17,174
1990-91	10,445	48.0	128,634	1,210	43.9	10,339	19,794	17.7	18,102
1991-92	10,745	46.6	130,578	1,302	40.4	10,492	20,601	17.1	19,111
1992-93	10,632	46.5	129,882	1,338	40.2	10,740	20,038	22.3	20,113
1993-94	10,597	48.6	138,782	1,338	40.9	11,700	19,591	23.7	20,790
1994-95	10,594	51.3	149,698	1,342	40.0	11,645	20,175	24.5	22,536
<b>PERCENTAGE CHANGE FROM PREVIOUS YEAR</b>									
1987-88	7.8	..	12.7	n.a.	..	n.a.	0.8	..	4.8
1988-89	2.6	..	15.0	6.0	..	20.8	1.4	..	11.0
1989-90	9.8	..	18.5	-5.0	..	16.2	3.4	..	16.7
1990-91	1.3	..	5.6	8.7	..	-9.2	-0.3	..	5.4
1991-92	2.9	..	1.5	7.6	..	1.5	4.1	..	5.6
1992-93	-1.1	..	-0.5	2.8	..	2.4	-2.7	..	5.2
1993-94	-0.3	..	6.9	0.0	..	8.9	-2.2	..	3.4
1994-95	0.0	..	7.9	0.3	..	-0.5	3.0	..	8.4
<b>QUARTERLY</b>									
1992 - 93 -									
March	10,739	47.0	32,210	1,313	49.9	3,263	20,159	26.6	6,084
June	10,632	46.2	31,175	1,338	36.8	2,359	20,038	22.8	4,961
1993 - 94 -									
September	10,604	46.8	33,133	1,362	35.2	2,551	19,992	19.1	3,916
December	10,650	50.3	38,096	1,377	41.6	3,290	19,925	23.4	5,370
March	10,625	50.0	35,007	1,321	50.9	3,546	19,606	28.4	6,611
June	10,597	47.4	32,547	1,338	36.1	2,313	19,591	24.3	4,893
1994 - 95 -									
September	10,560	48.7	34,734	1,326	34.0	2,418	19,988	20.9	4,211
December	10,608	53.0	41,265	1,360	40.0	3,000	20,126	24.5	5,681
March	10,603	53.4	37,897	1,337	50.1	3,776	20,132	28.4	7,047
June	10,605	50.0	35,802	1,346	35.9	2,451	20,452	24.3	5,597
1995 - 96 -									
September	10,703	50.3	37,077	1,289	32.4	2,273	20,350	22.3	4,809
<b>PERCENTAGE CHANGE FROM PREVIOUS QUARTER</b>									
1992 - 93 -									
June	-1.0	..	-3.2	1.9	..	-27.7	-0.6	..	-18.5
1993 - 94 -									
September	-0.3	..	6.3	1.8	..	8.1	-0.2	..	-21.1
December	0.4	..	15.0	1.1	..	29.0	-0.3	..	37.1
March	-0.2	..	-8.1	-4.1	..	7.8	-1.6	..	23.1
June	-0.3	..	-7.0	1.3	..	-34.8	-0.1	..	-26.0
1994 - 95 -									
September	-0.3	..	6.7	-0.9	..	4.5	2.0	..	-13.9
December	0.5	..	18.8	2.6	..	24.1	0.7	..	34.9
March	0.0	..	-8.2	-1.7	..	25.9	0.0	..	24.0
June	0.0	..	-5.5	0.7	..	-35.1	1.6	..	-20.6
1995 - 96 -									
September	0.9	..	3.6	-4.2	..	-7.3	-0.5	..	-14.1

**BUILDING APPROVALS**  
**South Australia**

Period	Number of dwelling units				Value (\$ million)			
	Houses		Total(a)		New residential building	Alterations and additions to residential building	Non-residential building	Total building
	Private sector	Total	Private sector	Total				
ANNUAL								
1986-87	5,811	6,706	7,111	9,192	487	82	584	1,152
1987-88	6,276	6,900	7,383	9,009	497	94	749	1,340
1988-89	7,526	8,006	9,642	11,238	690	109	895	1,694
1989-90	7,246	7,675	10,180	11,701	733	110	914	1,757
1990-91	8,351	8,633	10,418	11,426	755	119	591	1,465
1991-92	8,613	8,931	10,254	11,290	756	124	627	1,506
1992-93	9,710	10,087	11,548	12,341	841	133	418	1,392
1993-94	9,470	9,901	11,046	11,777	839	122	375	1,336
1994-95	7,757	8,147	9,208	9,762	740	120	493	1,353
PERCENTAGE CHANGE FROM PREVIOUS YEAR								
1988-89	19.9	16.0	30.6	24.7	38.8	16.0	19.5	26.4
1989-90	-3.7	-4.1	5.6	4.1	6.1	1.2	2.1	3.7
1990-91	15.2	12.5	2.3	-2.4	3.1	8.6	-35.4	-16.6
1991-92	3.1	3.5	-1.6	-1.2	0.1	3.9	6.1	2.8
1992-93	12.7	12.9	12.6	9.3	11.3	7.1	-33.2	-7.6
1993-94	-2.5	-1.8	-4.3	-4.6	-0.2	-8.0	-10.4	-4.0
1994-95	-18.1	-17.7	-16.6	-17.1	-11.8	-1.7	31.5	1.3
MONTHLY, ORIGINAL								
1994 - 95 -								
October	671	691	782	804	57.8	10.3	26.7	94.9
November	796	833	988	1,055	77.6	10.5	30.2	118.3
December	578	606	662	698	54.9	9.4	36.2	100.6
January	515	532	753	774	61.9	8.0	23.4	93.4
February	553	598	632	679	56.3	7.5	26.8	90.6
March	681	747	840	913	70.2	12.6	78.1	160.9
April	403	425	459	481	36.4	6.6	89.3	132.2
May	493	523	549	589	46.3	9.3	35.4	91.0
June	513	554	603	646	50.1	9.2	47.9	107.2
1995 - 96 -								
July	445	463	550	576	45.2	9.0	36.3	90.6
August	564	608	623	671	52.3	11.2	31.5	94.9
September	437	467	547	592	45.0	12.1	31.1	88.2
October	415	422	512	519	39.2	10.4	69.2	118.8
MONTHLY, TREND								
1994 - 95 -								
October	750	794	894	957	n.a.	n.a.	n.a.	n.a.
November	725	770	874	930				
December	692	736	842	891				
January	652	691	796	836				
February	607	641	737	770				
March	560	590	672	700				
April	516	543	609	637				
May	480	505	561	591				
June	456	483	535	570				
1995 - 96 -								
July	444	474	530	569				
August	439	473	534	575				
September	438	474	539	582				
October	445	482	557	599				
PERCENTAGE CHANGE FROM PREVIOUS MONTH, TREND								
1994 - 95 -								
November	-3.3	-3.0	-2.2	-2.8	n.a.	n.a.	n.a.	n.a.
December	-4.6	-4.4	-3.7	-4.2				
January	-5.8	-6.1	-5.5	-6.2				
February	-6.9	-7.2	-7.4	-7.9				
March	-7.7	-8.0	-8.8	-9.1				
April	-7.9	-8.0	-9.4	-9.0				
May	-7.0	-7.0	-7.9	-7.2				
June	-5.0	-4.4	-4.6	-3.6				
1995 - 96 -								
July	-2.6	-1.9	-0.9	-0.2				
August	-1.1	-0.2	0.8	1.1				
September	-0.2	0.2	0.9	1.2				
October	1.6	1.7	3.3	2.9				

(a) Total includes the number of self-contained dwelling units approved as part of the construction of non-residential building and alterations to existing buildings (including conversions to dwelling units).

**BUILDING COMMENCEMENTS**  
**South Australia**

Period	Number of dwelling units				Value (\$ million)				
	Houses		Total		New residential building	Alterations and additions to residential building	Non-residential building		Total building
	Private sector	Total	Private sector	Total			Private sector	Total	
	ANNUAL								
1983-84	7,666	8,642	9,854	12,200	506.4	49.5	190.3	341.7	897.6
1984-85	8,502	9,641	11,728	14,205	660.3	66.0	345.6	509.7	1,236.0
1985-86	6,334	7,267	8,805	10,705	558.5	80.9	430.7	602.4	1,241.7
1986-87	5,345	6,458	6,524	8,913	475.7	75.3	430.1	674.4	1,225.4
1987-88	5,664	6,388	6,709	8,443	472.9	92.2	527.2	718.8	1,283.8
1988-89	7,132	7,580	8,822	10,235	646.2	103.7	760.3	964.1	1,709.9
1989-90	6,734	7,174	9,412	10,936	718.2	111.6	669.6	934.2	1,763.9
1990-91	7,863	8,177	9,673	10,821	727.5	118.2	367.1	554.0	1,399.6
1991-92	8,036	8,344	9,608	10,671	727.2	125.1	344.5	607.8	1,460.1
1992-93	9,122	9,416	10,881	11,635	816.2	122.4	205.5	458.7	1,397.2
1993-94	9,159	9,590	10,693	11,481	845.3	126.5	209.9	373.0	1,344.8
1994-95	7,752	8,217	9,099	9,750	766.3	124.8	247.6	514.1	1,405.2
QUARTERLY									
1993 - 94 -									
December	2,336	2,395	2,672	2,798	205.4	35.6	60.9	106.6	347.7
March	1,977	2,023	2,406	2,549	188.1	29.8	51.1	97.6	315.4
June	2,235	2,396	2,628	2,880	213.4	30.2	55.2	93.5	337.1
1994 - 95 -									
September	2,413	2,526	2,855	3,083	235.6	34.3	57.0	101.8	371.7
December	2,303	2,435	2,670	2,834	221.1	31.8	52.8	99.5	352.4
March	1,631	1,735	1,934	2,064	167.9	26.4	55.6	92.1	286.4
June	1,403	1,519	1,638	1,767	141.8	32.2	82.3	220.7	394.7
1995 - 96 -									
September	1,412	1,506	1,659	1,767	n.y.a.	n.y.a.	n.y.a.	n.y.a.	n.y.a.

**VALUE OF BUILDING WORK DONE DURING PERIOD**  
**South Australia**

Period	New residential building				Alterations and additions to residential buildings	Non-residential building		Total building	
	Houses		Total			Private sector	Total	Private sector	Total
	Private sector	Total	Private sector	Total					
ANNUAL (\$ million)									
1983-84	312.0	348.0	385.2	464.5	48.3	194.8	327.0	627.0	839.8
1984-85	414.4	456.3	542.3	626.7	65.6	285.1	433.4	891.6	1,125.7
1985-86	369.2	411.5	497.9	585.1	78.7	413.6	589.7	988.5	1,253.4
1986-87	310.0	364.8	385.4	492.2	78.4	447.9	645.2	908.1	1,215.8
1987-88	343.8	381.1	391.4	467.7	88.2	551.8	811.2	1,027.0	1,367.1
1988-89	450.2	469.2	538.8	597.0	104.1	657.5	902.2	1,297.3	1,603.3
1989-90	493.8	518.9	657.4	724.9	116.3	743.2	988.6	1,514.0	1,829.8
1990-91	578.3	600.2	713.6	782.3	122.0	621.9	876.6	1,455.4	1,780.8
1991-92	591.5	607.5	693.4	748.5	125.1	310.3	484.1	1,127.5	1,357.6
1992-93	647.2	660.9	743.8	780.6	127.1	297.9	570.9	1,166.3	1,478.6
1993-94	719.1	746.4	828.9	876.3	132.0	217.7	462.1	1,177.2	1,470.4
1994-95	660.7	694.7	768.1	818.4	128.9	264.7	469.6	1,158.9	1,416.9
QUARTERLY (\$ million)									
1993 - 94 -									
September	197.3	203.8	224.0	235.7	32.3	59.7	134.7	315.9	402.8
December	178.8	187.6	208.4	222.9	36.5	54.6	119.6	299.4	378.9
March	167.4	172.2	192.3	202.3	32.4	50.2	96.8	274.3	331.5
June	175.7	182.9	204.2	215.3	30.8	53.1	111.0	287.5	357.2
1994 - 95 -									
September	185.6	193.5	215.3	230.8	37.4	63.7	113.5	316.1	381.8
December	185.3	195.7	216.0	231.4	35.6	63.0	117.8	313.1	384.7
March	153.3	159.5	179.5	187.9	25.1	57.2	104.4	261.4	317.4
June	136.4	145.9	157.3	168.3	30.8	80.8	133.9	268.3	333.0

**PRODUCTION, SELECTED COMMODITIES**  
**South Australia**

Period	Footwear (pairs)	Gas (m megajoules)	Electricity (including NT) ('000 kWh)	Coal (tonnes)	Sawn timber(a) (m <sup>3</sup> )
ANNUAL					
1985-86	2,209,898	86,893	9,606,839	2,181,713	221,803
1986-87	2,147,468	82,550	9,666,694	2,435,010	194,458
1987-88	1,982,301	83,101	10,137,144	2,566,347	254,453
1988-89	2,062,085	86,546	10,588,647	2,674,215	292,335
1989-90	1,749,112	85,070	10,665,118	2,921,861	228,156
1990-91	1,837,602	73,265	8,878,357	2,441,040	240,193
1991-92	1,852,890	78,210	10,025,649	2,819,880	271,603
1992-93	1,406,178	83,000	10,226,734	2,753,610	317,096
1993-94	1,382,949	89,382	10,560,251	2,643,000	364,961
1994-95	1,430,417	86,123	10,051,056	2,554,560	392,349
PERCENTAGE CHANGE FROM PREVIOUS YEAR					
1986-87	-2.8	-5.0	0.6	11.6	-12.3
1987-88	-7.7	0.7	4.9	5.4	30.9
1988-89	4.0	4.1	4.5	4.2	14.9
1989-90	-15.2	-1.7	0.7	9.3	-22.0
1990-91	5.1	-13.9	-16.8	-16.5	5.3
1991-92	0.8	6.7	12.9	15.5	13.1
1992-93	-24.1	6.1	2.0	-2.4	16.7
1993-94	-1.7	7.7	3.3	-4.0	15.1
1994-95	3.4	-3.6	-4.8	-3.3	7.5
MONTHLY/QUARTERLY (b), ORIGINAL					
1993 - 94 - June	139,555	7,422	851,000	259,080	98,255
1994 - 95 - July	127,210	7,858	885,099	254,640	..
August	129,977	8,529	935,339	229,980	..
September	146,686	7,352	885,856	248,820	97,308
October	130,132	8,074	838,934	105,240	..
November	135,984	7,393	823,049	168,420	..
December	109,496	6,567	845,271	219,240	95,869
January	53,146	6,783	837,610	198,960	..
February	111,711	6,474	833,604	230,340	..
March	148,345	7,088	829,113	210,780	94,383
April	88,951	5,409	733,508	238,680	..
May	119,883	7,095	783,073	205,740	..
June	128,896	7,501	820,600	243,720	104,789
1995 - 96 - July	116,044	8,342	878,070	227,340	..
August	123,733	7,667	791,871	214,680	..
September	134,797	6,201	685,549	214,200	121,851
October	n.y.a.	6,922	671,726	119,400	..
PERCENTAGE CHANGE FROM PREVIOUS MONTH/QUARTER (b)					
1994 - 95 - July	-8.8	5.9	4.0	-1.7	..
August	2.2	8.5	5.7	-9.7	..
September	12.9	-13.8	-5.3	8.2	-1.0
October	-11.3	9.8	-5.3	-57.7	..
November	4.5	-8.4	-1.9	60.0	..
December	-19.5	-11.2	2.7	30.2	-1.5
January	-51.5	3.3	-0.9	-9.3	..
February	110.2	-4.6	-0.5	15.8	..
March	32.8	9.5	-0.5	-8.5	-1.6
April	-40.0	-23.7	-11.5	13.2	..
May	34.8	31.2	6.8	-13.8	..
June	7.5	5.7	4.8	18.5	11.0
1995 - 96 - July	-10.0	11.2	7.0	-6.7	..
August	6.6	-8.1	-9.8	-5.6	..
September	8.9	-19.1	-13.4	-0.2	16.3
October	n.y.a.	11.6	-2.0	-44.3	..

(a) From Australian softwood logs only.

(b) Sawn timber production: data available quarterly only.

**PRODUCTION, LIVESTOCK PRODUCTS AND SELECTED COMMODITIES**  
**South Australia**

Period	Chicken	Pigmeat	Beef	Mutton	Lamb	Cheese	Wheat flour, other than self-raising
ANNUAL (tonnes)							
1983-84	33,549	34,740	81,172	23,758	31,114	25,226	78,690
1984-85	35,882	36,508	79,111	35,800	30,136	23,273	74,643
1985-86	34,235	37,432	77,898	41,507	31,485	25,086	73,926
1986-87	33,776	40,761	90,283	43,934	32,416	27,438	80,310
1987-88	34,907	36,671	91,701	45,562	34,335	25,497	91,325
1988-89	32,946	40,364	87,160	42,159	36,203	24,704	96,418
1989-90	35,248	40,815	99,699	50,939	38,052	22,774	88,503
1990-91	31,945	38,644	87,036	65,434	32,038	24,522	83,727
1991-92	36,978	34,538	90,661	72,578	29,941	23,494	81,065
1992-93	38,619	38,153	96,338	65,689	39,334	26,140	87,761
1993-94	40,671	38,529	94,395	71,354	45,199	26,674	84,683
1994-95	39,031	33,033	99,121	66,622	36,197	27,205	80,666
PERCENTAGE CHANGE FROM PREVIOUS YEAR							
1984-85	7.0	5.1	-2.5	50.7	-3.1	-7.7	-5.1
1985-86	-4.6	2.5	-1.5	15.9	4.5	7.8	-1.0
1986-87	-1.3	8.9	15.9	5.8	3.0	9.4	8.6
1987-88	3.3	-10.0	1.6	3.7	5.9	-7.1	13.7
1988-89	-5.6	10.1	-5.0	-7.5	5.4	-3.1	5.6
1989-90	7.0	1.1	14.4	20.8	5.1	-7.8	-8.2
1990-91	-9.4	-5.3	-12.7	28.5	-15.8	7.7	-5.4
1991-92	15.8	-10.6	4.2	10.9	-6.5	-4.2	-3.2
1992-93	4.4	10.5	6.3	-9.5	31.4	11.3	8.3
1993-94	5.3	1.0	-2.0	8.6	14.9	2.0	-3.5
1994-95	-4.0	-14.3	5.0	-6.6	-19.9	2.0	-4.7
MONTHLY (tonnes)							
1993 - 94 - June	3,648	3,021	5,377	3,411	4,636	1,497	7,660
1994 - 95 - July	3,511	2,787	3,793	2,752	3,159	2,177	5,743
August	2,750	3,104	6,061	3,538	3,272	2,433	6,611
September	3,284	2,550	8,132	7,529	3,934	3,016	6,803
October	3,209	3,094	8,284	6,603	2,509	3,676	5,373
November	2,845	3,784	8,927	8,282	3,244	3,116	7,414
December	3,321	2,929	8,859	6,781	2,816	2,486	7,256
January	3,491	2,368	9,623	6,409	2,972	2,905	6,229
February	3,168	2,684	9,445	5,883	3,128	1,781	7,128
March	3,563	2,285	11,089	6,753	3,703	1,230	7,729
April	3,928	2,069	7,764	5,054	2,691	1,927	6,008
May	3,028	3,009	9,421	4,543	2,723	1,662	7,006
June	2,933	2,370	7,723	2,495	2,046	2,138	7,366
1995 - 96 - July	3,465	2,161	3,526	1,967	1,799	2,180	6,104
August	2,656	2,614	6,588	3,061	3,204	2,450	7,575
September	3,111	2,240	8,850	4,525	4,212	n.y.a.	7,479
October	2,961	2,125	9,377	5,002	4,455	n.y.a.	6,878
PERCENTAGE CHANGE FROM PREVIOUS MONTH							
1994 - 95 - July	-3.8	-7.7	-29.5	-19.3	-31.9	45.4	-25.0
August	-21.7	11.4	59.8	28.6	3.6	11.8	15.1
September	19.4	-17.8	34.2	112.8	20.2	24.0	2.9
October	-2.3	21.3	1.9	-12.3	-36.2	21.9	-21.0
November	-11.3	22.3	7.8	25.4	29.3	-15.2	38.0
December	16.7	-22.6	-0.8	-18.1	-13.2	-20.2	-2.1
January	5.1	-19.2	8.6	-5.5	5.5	16.9	-14.2
February	-9.3	13.3	-1.8	-8.2	5.2	-38.7	14.4
March	12.5	-14.9	17.4	14.8	18.4	-30.9	8.4
April	10.2	-9.5	-30.0	-25.2	-27.3	56.7	-22.3
May	-22.9	45.4	21.3	-10.1	1.2	-13.8	16.6
June	-3.1	-21.2	-18.0	-45.1	-24.9	28.6	5.1
1995 - 96 - July	18.1	-8.8	-54.3	-21.2	-12.1	2.0	-17.1
August	-23.3	21.0	86.8	55.6	78.1	12.4	24.1
September	17.1	-14.3	34.3	47.8	31.5	n.y.a.	-1.3
October	-4.8	-5.1	6.0	10.5	5.8	n.y.a.	-8.0

**CONSUMER PRICE INDEX: BY GROUP**  
**Adelaide**

<i>Period</i>	<i>Food</i>	<i>Clothing</i>	<i>Housing</i>	<i>Household equipment and operation</i>	<i>Transport- ation</i>	<i>Tobacco and alcohol</i>	<i>Health and personal care</i>	<i>Recreation and education</i>	<i>All groups</i>
ANNUAL AVERAGE (1989-90 = 100)									
1983-84	67.4	64.1	61.8	69.0	64.3	61.6	71.5	66.1	65.8
1984-85	71.2	68.4	68.3	73.2	68.3	67.2	57.8	68.9	68.9
1985-86	77.0	74.0	73.4	78.9	74.8	72.7	63.2	74.9	74.7
1986-87	83.2	81.8	76.9	84.3	83.0	79.4	75.6	82.1	81.5
1987-88	87.6	88.2	79.5	89.9	88.6	85.7	84.0	89.6	87.0
1988-89	95.2	95.3	87.0	95.1	94.2	92.5	90.8	94.6	93.3
1989-90	100.0	100.0	100.0	100.0	100.0	100.0	100.0	100.0	100.0
1990-91	103.8	103.6	104.1	105.4	107.0	112.0	113.4	104.8	106.2
1991-92	106.0	105.3	100.4	107.5	110.5	118.6	127.8	107.7	108.9
1992-93	109.3	107.0	94.3	107.6	115.0	131.2	134.9	110.7	111.2
1993-94	111.7	106.6	92.1	108.0	117.8	141.5	142.7	113.7	113.4
1994-95	115.1	104.9	97.9	109.2	120.2	148.9	151.3	116.3	116.9
PERCENTAGE CHANGE FROM PREVIOUS YEAR, ANNUAL AVERAGE									
1984-85	5.6	6.7	10.5	6.1	6.2	9.1	-19.2	4.2	4.7
1985-86	8.1	8.2	7.5	7.8	9.5	8.2	9.3	8.7	8.4
1986-87	8.1	10.5	4.8	6.8	11.0	9.2	19.6	9.6	9.1
1987-88	5.3	7.8	3.4	6.6	6.7	7.9	11.1	9.1	6.7
1988-89	8.7	8.0	9.4	5.8	6.3	7.9	8.1	5.6	7.2
1989-90	5.0	4.9	14.9	5.2	6.2	8.1	10.1	5.7	7.2
1990-91	3.8	3.6	4.1	5.4	7.0	12.0	13.4	4.8	6.2
1991-92	2.1	1.6	-3.6	2.0	3.3	5.9	12.7	2.8	2.5
1992-93	3.1	1.6	-6.1	0.1	4.1	10.6	5.6	2.8	2.1
1993-94	2.2	-0.4	-2.3	0.4	2.4	7.9	5.8	2.7	2.0
1994-95	3.0	-1.6	6.3	1.1	2.0	5.2	6.0	2.2	3.1
QUARTERLY (1989-90=100.0)									
1993 - 94 -									
September	110.4	107.5	93.3	107.5	117.3	138.8	138.7	112.8	112.7
December	111.3	107.1	91.6	108.2	117.6	140.0	138.4	113.0	112.8
March	112.0	106.0	91.6	107.9	117.6	142.6	145.5	114.1	113.6
June	113.0	105.8	91.9	108.2	118.5	144.5	148.2	114.8	114.4
1994 - 95 -									
September	114.5	105.2	92.4	108.3	119.6	144.2	148.3	115.1	114.9
December	114.3	105.1	95.6	108.7	119.8	147.8	148.7	116.2	116.0
March	115.7	104.2	100.8	109.5	119.9	150.2	153.0	117.2	117.8
June	115.7	105.1	102.8	110.2	121.4	153.2	155.3	116.5	118.8
1995 - 96 -									
September	117.8	104.8	102.7	111.5	124.4	154.8	155.4	116.5	120.1
PERCENTAGE CHANGE FROM SAME QUARTER OF PREVIOUS YEAR									
1993 - 94 -									
September	2.9	1.4	-2.2	-0.6	3.2	9.7	5.5	3.6	2.4
December	3.0	-0.1	-2.6	0.1	2.2	7.4	4.7	2.8	1.9
March	0.6	-1.1	-2.8	1.1	2.3	8.6	6.4	2.1	1.8
June	2.4	-1.7	-2.0	0.8	2.1	5.9	6.7	2.2	1.9
1994 - 95 -									
September	3.7	-2.1	-1.0	0.7	2.0	3.9	6.9	2.0	2.0
December	2.7	-1.9	4.4	0.5	1.9	5.6	7.4	2.8	2.8
March	3.3	-1.7	10.0	1.5	2.0	5.3	5.2	2.7	3.7
June	2.4	-0.7	11.9	1.8	2.4	6.0	4.8	1.5	3.8
1995 - 96 -									
September	2.9	-0.4	11.1	3.0	4.0	7.4	4.8	1.2	4.5
PERCENTAGE CHANGE FROM PREVIOUS QUARTER									
1993 - 94 -									
December	0.8	-0.4	-1.8	0.7	0.3	0.9	-0.2	0.2	0.1
March	0.6	-1.0	0.0	-0.3	0.0	1.9	5.1	1.0	0.7
June	0.9	-0.2	0.3	0.3	0.8	1.3	1.9	0.6	0.7
1994 - 95 -									
September	1.3	-0.6	0.5	0.1	0.9	-0.2	0.1	0.3	0.4
December	-0.2	-0.1	3.5	0.4	0.2	2.5	0.3	1.0	1.0
March	1.2	-0.9	5.4	0.7	0.1	1.6	2.9	0.9	1.6
June	0.0	0.9	2.0	0.6	1.3	2.0	1.5	-0.6	0.8
1995 - 96 -									
September	1.8	-0.3	-0.1	1.2	2.5	1.0	0.1	0.0	1.1



**AVERAGE RETAIL PRICES OF SELECTED CONSUMER ITEMS  
Adelaide (cents)**

Item	Unit	Quarter				
		Sept. 1994	Dec. 1994	Mar. 1995	June 1995	Sept. 1995
Milk, carton, supermarket sales	1 litre	101	102	104	110	114
Cheese, processed, sliced, wrapped	500g	330	333	317	323	327
Butter	500g	161	159	148	151	163
Bread, white loaf, sliced, supermarket sales	680g	125	128	138	139	148
Self-raising flour	2kg	205	195	216	204	204
Beef:						
Rump steak	1kg	1,180	1,124	1,139	1,121	1,177
Corned silverside	1kg	672	665	653	651	639
Lamb:						
Leg	1kg	507	476	495	533	561
Loin chops	1kg	666	637	677	699	745
Forequarter chops	1kg	500	448	494	507	545
Pork:						
Leg	1kg	598	596	600	589	598
Loin chops	1kg	753	747	745	736	747
Chicken, frozen	1kg	325	331	328	323	330
Bacon, middle rashers	250g pkt	260	244	309	291	296
Sausages	1kg	373	370	373	370	374
Potatoes	1kg	60	95	100	87	106
Onions	1kg	100	109	109	118	181
Peaches, canned	825g	194	185	190	186	190
Eggs, 55g	doz	163	170	181	185	210
Sugar, white	2kg	199	191	189	180	174
Tea	250g	159	165	164	165	162
Coffee, instant, jar	150g	512	521	572	546	563
Margarine, polyunsaturated	500g	140	138	141	152	140
Petrol:						
Leaded(a)	1 litre	71.5	70.8	71.3	72.0	75.3
Unleaded(b)	1 litre	69.7	68.7	69.1	69.8	73.1

(a) Description change only, from super grade to leaded.

(b) Introduced from March quarter 1994.

**ESTIMATED RESIDENT POPULATION AND COMPONENTS OF POPULATION CHANGE  
South Australia**

Period	Live births(a)	Deaths(a)	Components of population change			Total increase	Population at end of period
			Natural increase	Net migration			
				Interstate	Overseas (b)		
ANNUAL							
1984-85	19,901	10,204	9,697	-2,317	4,329	11,149	1,371,197
1985-86	19,657	10,427	9,230	-1,417	5,084	11,353	1,382,550
1986-87	19,628	10,577	9,051	-3,977	6,200	10,214	1,392,764
1987-88	19,288	10,799	8,489	-1,240	5,952	12,145	1,404,909
1988-89	19,528	10,814	8,664	-221	6,665	14,120	1,419,029
1989-90	19,653	11,329	8,253	-252	5,762	13,027	1,432,056
1990-91	19,966	11,120	8,767	1,545	4,619	14,243	1,446,299
1991-92	19,530	11,035	8,532	-133	2,897	11,296	1,457,595
1992-93	19,686	11,163	8,403	-4,650	1,546	5,299	1,462,894
1993-94	20,030	11,733	8,230	-3,466	2,126	6,890	1,469,371
1994-95	19,559	11,496	8,022	-6,529	3,102	4,595	1,473,966
MONTHLY/QUARTERLY							
1994 - 95 -							
August	1,789	1,165	..	..	..	..	..
September	1,333	1,005	1,334	-1,380	761	715	1,470,086
October	1,546	942	..	..	..	..	..
November	2,013	1,025	..	..	..	..	..
December	1,525	963	2,135	-1,249	279	1,165	1,471,251
January	1,757	911	..	..	..	..	..
February	1,408	656	..	..	..	..	..
March	1,872	935	2,513	-2,054	1,292	1,751	1,473,002
April	1,393	821	..	..	..	..	..
May	1,806	1,097	..	..	..	..	..
June	1,710	941	2,040	-1,846	770	964	1,473,966
1995 - 96 -							
July	1,506	937	..	..	..	..	..
August	1,615	1,176	..	..	..	..	..
September	1,726	958	1,776	n.y.a.	n.y.a.	n.y.a.	n.y.a.
October	1,526	1,040	..	..	..	..	..
November	1,647	871	..	..	..	..	..

(a) Registrations.

(b) Includes category jumping.

**LABOUR FORCE STATUS OF THE CIVILIAN POPULATION**  
**South Australia**

Period	Employed Full-time Males	Employed Full-time Females	Employed Part-time Males	Employed Part-time Females	Employed Total Males	Employed Total Females	Unemployed Males	Unemployed Females	Labour Force Males	Labour Force Females
ANNUAL AVERAGE ('000)										
1985-86	336.3	134.3	24.4	98.9	360.7	233.2	32.2	22.4	392.9	255.6
1986-87	337.1	137.0	25.4	106.6	362.5	243.6	35.6	24.5	398.1	268.1
1987-88	334.4	137.4	29.3	111.6	363.7	249.0	35.1	24.9	398.8	273.9
1988-89	345.5	145.3	29.7	115.8	375.2	261.1	32.2	22.5	407.4	283.6
1989-90	352.0	149.3	31.5	119.8	383.5	269.1	28.5	20.9	412.0	290.0
1990-91	345.2	148.4	34.1	125.7	379.3	274.1	37.8	25.3	417.1	299.4
1991-92	323.3	145.7	37.5	121.6	360.8	267.3	50.0	29.3	410.8	296.6
1992-93	322.2	143.2	39.2	126.8	361.4	270.0	51.9	29.9	413.3	299.9
1993-94	322.0	146.3	40.0	127.0	362.0	273.3	47.3	29.9	409.3	303.2
1994-95	323.1	151.5	42.6	131.3	365.7	282.8	44.6	28.7	410.3	311.5
PERCENTAGE CHANGE FROM PREVIOUS YEAR, ANNUAL AVERAGE										
1986-87	0.2	2.0	4.1	7.8	0.5	4.5	10.6	9.4	1.3	4.9
1987-88	-0.8	0.3	15.4	4.7	0.3	2.2	-1.4	1.6	0.2	2.2
1988-89	3.3	5.7	1.4	3.8	3.2	4.9	-8.3	-9.6	2.2	3.5
1989-90	1.9	2.8	6.1	3.5	2.2	3.1	-11.5	-7.1	1.1	2.3
1990-91	-1.9	-0.6	8.3	4.9	-1.1	1.9	32.6	21.1	1.2	3.2
1991-92	-6.3	-1.8	10.0	-3.3	-4.9	-2.5	32.3	15.8	-1.5	-0.9
1992-93	-0.3	-1.7	4.5	4.3	0.2	1.0	3.8	2.0	0.6	1.1
1993-94	-0.1	2.2	2.0	0.2	0.2	1.2	-8.9	0.0	-1.0	1.1
1994-95	0.3	3.6	6.5	3.4	1.0	3.5	-5.7	-4.0	0.2	2.7
MONTHLY, ORIGINAL ('000)										
1994 - 95 -										
November	322.8	155.5	41.5	126.3	364.2	281.9	42.2	29.7	406.5	311.6
December	322.3	153.2	41.7	132	364.0	285.2	45.1	28.9	409.0	314.1
January	320.2	153.0	40.9	122.3	361.1	275.3	50.4	26.0	411.5	301.4
February	328.2	154.7	43.6	127.9	371.8	282.6	45.5	30.9	417.3	313.4
March	317.8	151.5	47.8	130.7	365.6	282.2	43.7	30.4	409.3	312.5
April	320.4	149.4	47.7	132.8	368.1	282.2	42.7	28.8	410.8	311.0
May	321.6	154.9	46.3	133.5	367.9	288.3	43.2	26.1	411.1	314.4
June	315.6	149.3	48.7	140.0	364.2	289.3	47.0	25.1	411.2	314.3
1995 - 96 -										
July	323.1	150.3	45.7	137.9	368.8	288.2	41.5	25.0	410.3	313.2
August	323.2	149.1	45.7	139.2	369.0	288.3	43.4	24.1	412.4	312.4
September	326.4	148.7	46.6	136.3	373.0	285.0	44.9	25.8	418.0	310.8
October	324.7	148.9	44.6	132.5	369.3	281.4	43.5	24.7	412.8	306.1
November	328.7	151.7	43.7	133.7	372.4	285.4	40.5	23.5	412.9	308.9
MONTHLY, TREND ('000)										
1994 - 95 -										
November	324.5	151.7	39.8	129.8	364.3	281.5	44.4	29.0	408.6	310.5
December	322.9	152.0	41.3	129.0	364.2	281.0	44.2	28.2	408.4	309.2
January	321.7	152.1	43.0	128.8	364.7	280.9	44.0	27.7	408.7	308.6
February	320.8	152.3	44.6	129.1	365.4	281.4	44.0	27.4	409.4	308.8
March	320.2	152.6	45.9	130.1	366.1	282.7	44.2	27.3	410.3	310.0
April	320.1	152.9	46.8	131.7	366.9	284.6	44.5	27.3	411.3	311.9
May	320.4	152.9	47.2	133.5	367.6	286.4	44.8	27.3	412.4	313.7
June	321.1	152.4	47.3	135.2	368.4	287.6	44.9	27.0	413.3	314.6
1995 - 96 -										
July	322.5	151.5	46.8	136.3	369.3	287.8	44.9	26.5	414.2	314.3
August	324.2	150.4	46.1	136.7	370.3	287.1	44.6	26.1	414.9	313.2
September	325.8	149.6	45.3	136.4	371.1	286.0	44.2	25.7	415.3	311.7
October	327.0	149.0	44.6	135.8	371.6	284.8	43.8	25.3	415.3	310.1
November	328.1	148.3	43.8	135.2	371.9	283.5	43.3	25.1	415.2	308.6
PERCENTAGE CHANGE FROM PREVIOUS MONTH, TREND										
1994 - 95 -										
December	-0.5	0.2	3.8	-0.6	0.0	-0.2	-0.5	-2.8	0.0	-0.4
January	-0.4	0.1	4.1	-0.2	0.1	0.0	-0.5	-1.8	0.1	-0.2
February	-0.3	0.1	3.7	0.2	0.2	0.2	0.0	-1.1	0.2	0.1
March	-0.2	0.2	2.9	0.8	0.2	0.5	0.5	-0.4	0.2	0.4
April	0.0	0.2	2.0	1.2	0.2	0.7	0.7	0.0	0.2	0.6
May	0.1	0.0	0.9	1.4	0.2	0.6	0.7	0.0	0.3	0.6
June	0.2	-0.3	0.2	1.3	0.2	0.4	0.2	-1.1	0.2	0.3
1995 - 96 -										
July	0.4	-0.6	-1.1	0.8	0.2	0.1	0.0	-1.9	0.2	-0.1
August	0.5	-0.7	-1.5	0.3	0.3	-0.2	-0.7	-1.5	0.2	-0.3
September	0.5	-0.5	-1.7	-0.2	0.2	-0.4	-0.9	-1.5	0.1	-0.5
October	0.4	-0.4	-1.5	-0.4	0.1	-0.4	-0.9	-1.6	0.0	-0.5
November	0.3	-0.5	-1.8	-0.4	0.1	-0.5	-1.1	-0.8	0.0	-0.5

**LABOUR FORCE STATUS OF THE CIVILIAN POPULATION AGED 15 AND OVER**  
**South Australia**

Period	Civilian Population aged 15 and over (000) Males	Civilian Population aged 15 and over (000) Females	Unemploy- ment rate Ages 15-19 (%) Persons	Unemploy- ment rate All Ages (%) Males	Unemploy- ment rate All Ages (%) Females	Unemploy- ment rate All Ages (%) Persons	Partici- pation rate (%) Males	Partici- pation rate (%) Females	Partici- pation rate (%) Persons
	ANNUAL AVERAGE								
1984-85	518.8	538.9	22.1	9.0	9.6	9.2	74.9	45.4	59.9
1985-86	526.9	545.6	20.6	8.2	8.8	8.4	75.6	46.8	60.5
1986-87	534.8	552.4	22.1	8.9	9.1	9.0	74.4	48.5	61.3
1987-88	542.4	560.0	20.8	8.8	9.1	8.9	73.5	48.9	61.0
1988-89	547.9	566.9	17.8	7.9	7.9	7.9	74.3	50.0	62.0
1989-90	552.4	573.4	16.2	6.9	7.2	7.1	74.6	50.6	62.4
1990-91	558.3	579.8	19.2	9.1	8.4	8.8	74.7	51.6	63.0
1991-92	563.9	585.4	25.0	12.1	9.9	11.2	72.9	50.7	61.6
1992-93	567.4	588.9	26.6	12.6	10.0	11.5	72.8	51.0	61.7
1993-94	570.6	592.0	28.3	11.5	9.8	10.8	71.7	51.2	61.3
1994-95	573.7	594.7	25.2	10.9	9.2	10.2	71.5	52.4	61.8
PERCENTAGE CHANGE FROM PREVIOUS YEAR, ANNUAL AVERAGE									
1985-86	1.6	1.2	..	..	..	..	..	..	..
1986-87	1.5	1.2	..	..	..	..	..	..	..
1987-88	1.4	1.4	..	..	..	..	..	..	..
1988-89	1.0	1.2	..	..	..	..	..	..	..
1989-90	0.8	1.1	..	..	..	..	..	..	..
1990-91	1.1	1.1	..	..	..	..	..	..	..
1991-92	1.0	1.0	..	..	..	..	..	..	..
1992-93	0.6	0.6	..	..	..	..	..	..	..
1993-94	0.6	0.6	..	..	..	..	..	..	..
1994-95	0.6	0.5	..	..	..	..	..	..	..
MONTHLY, ORIGINAL									
1994 - 95 -									
August	572.7	593.8	27.3	10.9	9.3	10.2	71.1	51.9	61.3
September	572.9	594.0	28.3	10.9	9.6	10.3	71.6	53.0	62.1
October	573.2	594.2	29.3	10.6	9.6	10.2	71.6	52.0	61.6
November	573.4	594.4	26.1	10.4	9.5	10.0	70.9	52.4	61.5
December	573.6	594.6	25.6	11.0	9.2	10.2	71.3	52.8	61.9
January	573.9	594.8	24.3	12.3	8.6	10.7	71.7	50.7	61.0
February	574.2	595.0	25.1	10.9	9.8	10.4	72.7	52.7	62.5
March	574.4	595.2	21.3	10.7	9.7	10.3	71.3	52.5	61.7
April	574.6	595.4	23.9	10.4	9.2	9.9	71.5	52.2	61.7
May	574.7	595.6	22.0	10.5	8.3	9.6	71.5	52.8	62.0
June	574.9	595.8	24.3	11.4	8.0	9.9	71.5	52.8	62.0
1995 - 96									
July	575.0	595.9	23.8	10.1	8.0	9.2	71.3	52.6	61.8
August	575.1	596.1	27.2	10.5	7.7	9.3	71.7	52.4	61.9
September	575.3	596.2	27.5	10.7	8.3	9.7	72.7	52.1	62.2
October	575.5	596.5	30.8	10.5	8.1	9.5	71.7	51.3	61.3
November	575.7	596.7	n.y.a.	9.8	7.6	8.9	71.7	51.8	61.6
MONTHLY, TREND									
1994 - 95 -									
August	n.a.	n.a.	n.a.	10.9	10.1	10.6	71.6	52.6	61.9
September				10.9	10.0	10.5	71.5	52.6	61.9
October				10.9	9.7	10.3	71.4	52.5	61.8
November				10.9	9.4	10.2	71.3	52.2	61.6
December				10.8	9.1	10.1	71.2	52.0	61.4
January				10.8	9.0	10.0	71.2	51.9	61.4
February				10.8	8.9	9.9	71.3	51.9	61.4
March				10.8	8.8	9.9	71.4	52.1	61.6
April				10.8	8.8	9.9	71.6	52.4	61.8
May				10.9	8.7	9.9	71.8	52.7	62.0
June				10.9	8.6	9.9	71.9	52.8	62.2
1995 - 96 -									
July				10.8	8.4	9.8	72.0	52.7	62.2
August				10.7	8.3	9.7	72.1	52.5	62.2
September				10.6	8.2	9.6	72.2	52.3	62.1
October				10.5	8.2	9.5	72.2	52.0	61.9
November				10.4	8.1	9.4	72.1	51.7	61.7

**LABOUR FORCE STATUS OF THE CIVILIAN POPULATION AGED 15 AND OVER**  
**Adelaide Statistical Division and the Balance of South Australia**

Period	Employed Males ('000)	Employed Females ('000)	Unemployed Males ('000)	Unemployed Females ('000)	Unemploy- ment rate Males (%)	Unemploy- ment rate Females (%)	Participa- tion rate Males (%)	Participa- tion rate Females (%)
<b>ADELAIDE STATISTICAL DIVISION</b>								
1993 - 94 -								
November	260.8	204.2	37.3	22.3	12.5	9.9	71.2	50.9
December	266.7	208.3	36.4	24.3	12.0	10.4	72.3	52.2
January	261.0	199.9	41.4	25.9	13.7	11.5	72.1	50.7
February	261.3	202.7	39.4	25.8	13.1	11.3	71.6	51.2
March	267.0	204.6	35.7	24.6	11.8	10.7	72.0	51.4
April	264.3	205.5	34.0	20.8	11.4	9.2	70.9	50.7
May	265.2	207.0	34.0	24.3	11.4	10.5	71.1	51.8
June	263.3	204.2	32.7	23.6	11.0	10.4	70.3	51.0
1994 - 95 -								
July	265.6	210.8	33.6	24.0	11.2	10.2	71.1	52.5
August	260.9	209.8	36.6	23.3	12.3	10.0	70.6	52.1
November	261.7	212.6	33.2	23.1	11.3	9.8	69.9	52.6
February	267.9	209.6	35.8	24.7	11.8	10.6	71.9	52.3
May	264.7	212.0	34.6	22.0	11.6	9.4	70.8	52.2
August	263.1	215.3	33.9	19.4	11.4	8.3	70.2	52.3
November	265.3	212.3	32.8	17.0	11.0	7.4	70.4	51.1
<b>ASD: NORTHERN ADELAIDE</b>								
1993 - 94 -								
November	77.8	56.2	11.4	8.3	12.8	12.9	73.5	50.0
December	78.9	57.2	11.3	9.8	12.5	14.6	72.7	51.5
January	78.9	56.1	11.7	10.2	12.9	15.4	73.0	50.7
February	79.3	60.9	12.1	9.1	13.2	13.0	74.6	52.9
March	82.1	59.0	10.7	8.9	11.5	13.0	75.8	52.1
April	80.1	60.4	10.7	7.0	11.8	10.4	74.1	52.0
May	82.7	59.9	9.7	9.1	10.5	13.1	75.3	53.1
June	81.6	58.8	9.9	9.2	10.8	13.5	75.0	51.5
1994 - 95 -								
July	84.7	62.8	9.6	8.5	10.1	11.9	75.9	53.8
August	83.0	62.8	11.7	7.6	12.4	10.8	75.9	52.5
November	80.7	62.8	12.9	6.9	13.8	9.9	73.0	51.6
February	82.8	63.7	13.4	8.1	13.9	11.3	74.7	54.8
May	82.7	60.9	12.1	8.1	12.7	11.7	75.8	52.5
August	81.6	64.8	14.1	7.7	14.8	10.6	75.2	53.4
November	83.4	67.2	11.8	6.1	12.4	8.3	75.5	54.3
<b>ASD: WESTERN ADELAIDE</b>								
1993 - 94 -								
November	49.0	38.8	10.7	5.5	17.9	12.5	67.5	47.5
December	50.1	39.3	10.2	4.7	17.0	10.6	68.5	46.0
January	51.4	36.1	10.7	6.8	17.2	15.9	68.7	45.8
February	48.4	35.7	10.7	5.4	18.0	13.2	67.5	44.1
March	48.2	38.3	9.7	4.7	16.8	10.9	67.4	45.0
April	49.3	37.6	10.2	4.9	17.2	11.6	68.1	44.1
May	50.7	39.5	9.2	4.3	15.3	9.9	68.0	46.4
June	49.9	37.5	9.5	4.1	16.0	9.8	67.2	44.5
1994 - 95 -								
July	48.3	37.6	9.1	5.2	15.8	12.2	66.6	46.1
August	48.2	38.8	9.2	4.6	16.0	10.7	66.1	46.7
November	47.5	39.3	7.2	6.4	13.2	13.9	64.7	48.2
February	45.7	39.0	5.9	5.4	11.4	12.1	64.0	46.5
May	48.7	38.4	6.5	4.5	11.8	10.5	67.1	46.9
August	47.8	36.9	7.6	3.4	13.8	8.4	65.9	46.7
November	47.1	38.2	7.9	3.2	14.4	7.8	63.8	47.1

**LABOUR FORCE STATUS OF THE CIVILIAN POPULATION AGED 15 AND OVER**  
**Adelaide Statistical Division and the Balance of South Australia - continued**

Period	Employed Males ('000)	Employed Females ('000)	Unem- ployed Males ('000)	Unem- ployed Females ('000)	Unemploy- ment rate Males (%)	Unemploy- ment rate Females (%)	Participa- tion rate Males (%)	Participa- tion rate Females (%)
ASD: EASTERN ADELAIDE								
1993 - 94 -								
November	52.5	43.1	5.7	4.0	9.8	8.5	70.4	52.1
December	55.8	47.1	4.8	4.2	7.9	8.2	72.5	57.2
January	54.3	46.0	6.3	3.6	10.4	7.3	72.6	54.1
February	54.9	45.2	6.5	4.1	10.6	8.3	71.0	55.1
March	57.9	46.7	5.4	3.6	8.5	7.2	70.4	54.1
April	56.3	48.7	4.6	3.0	7.6	5.8	70.6	54.4
May	54.2	47.7	6.0	4.4	9.9	8.4	69.5	54.8
June	56.0	49.7	4.4	3.4	7.3	6.4	68.0	56.3
1994 - 95 -								
July	55.0	51.0	6.3	3.7	10.3	6.8	69.2	58.3
August	56.0	50.5	6.2	3.8	9.9	7.0	71.8	58.8
November	58.8	50.7	5.4	2.4	8.5	4.5	72.1	59.3
February	59.4	45.8	7.4	3.8	11.0	7.7	74.2	54.5
May	58.5	45.2	6.5	3.5	10.0	7.2	69.7	53.6
August	56.4	46.6	4.8	2.5	7.9	5.2	70.9	53.6
November	54.3	45.9	5.2	*1.9	8.7	*4.0	70.4	51.2
ASD: SOUTHERN ADELAIDE								
1993 - 94 -								
November	81.5	66.1	9.6	4.5	10.5	6.3	71.9	52.2
December	81.8	64.7	10.0	5.6	10.9	8.0	74.4	54.0
January	76.3	61.8	12.7	5.2	14.3	7.8	73.2	51.7
February	78.7	60.9	10.1	7.2	11.4	10.6	71.9	52.0
March	78.8	60.6	9.9	7.4	11.2	10.9	72.8	53.2
April	78.6	58.9	8.4	5.8	9.7	9.0	70.1	51.6
May	77.6	59.9	9.1	6.6	10.5	9.9	70.3	52.1
June	75.9	58.2	8.9	6.9	10.5	10.6	69.6	51.2
1994 - 95 -								
July	77.7	59.3	8.7	6.5	10.0	9.9	70.5	51.5
August	73.7	57.8	9.5	7.3	11.4	11.2	67.4	50.8
November	74.7	59.8	7.6	7.5	9.3	11.1	68.5	52.4
February	80.0	61.1	9.2	7.5	10.4	10.9	72.5	52.5
May	74.8	67.5	9.5	5.9	11.3	8.0	69.0	54.6
August	77.4	66.9	7.3	5.7	8.6	7.9	67.6	53.9
November	80.4	61.0	7.9	5.7	8.9	8.6	69.7	50.4
BALANCE OF SOUTH AUSTRALIA (Excludes ASD)								
1993 - 94 -								
November	101.9	69.5	10.2	6.6	9.1	8.6	74.1	52.0
December	101.2	70.7	11.9	7.6	10.5	9.7	74.8	53.4
January	100.4	68.4	12.7	7.7	11.2	10.1	74.8	52.0
February	98.3	69.6	10.7	7.7	9.8	10.0	72.1	52.8
March	97.5	68.4	11.7	8.1	10.7	10.5	72.2	52.2
April	97.6	69.0	10.5	6.7	9.8	8.8	71.5	51.6
May	98.6	67.3	9.8	6.7	9.0	9.1	71.6	50.5
June	97.8	69.8	11.9	7.5	10.8	9.7	72.5	52.8
1994 - 95 -								
July	100.4	72.2	8.8	6.4	8.1	8.1	72.2	53.6
August	101.9	69.6	7.8	5.5	7.1	7.3	72.6	51.2
November	102.6	69.2	9.0	6.6	8.1	8.7	73.7	51.7
February	103.9	73.0	9.6	6.1	8.5	7.7	74.8	53.8
May	103.2	76.3	8.6	4.1	7.7	5.1	73.5	54.6
August	105.9	73.0	9.5	4.7	8.2	6.0	75.8	52.7
November	107.2	73.0	7.6	6.5	6.7	8.2	75.4	53.9

\* Estimate has a relative standard error exceeding 25%; it is subject to sampling variability too high for most practical uses.

**AVERAGE WEEKLY EARNINGS OF EMPLOYEES**  
**South Australia**

Period	Full-time adults						All employees		
	Ordinary time earnings			Total earnings			Males	Females	Persons
	Males	Females	Persons	Males	Females	Persons			
ANNUAL AVERAGE (\$ per week)									
1983-84	358.30	294.50	339.90	377.60	300.20	355.20	346.60	218.30	294.00
1984-85	381.90	319.30	364.80	407.40	325.80	385.10	367.20	238.70	316.20
1985-86	406.30	340.50	388.30	431.80	346.60	408.40	389.00	252.70	334.50
1986-87	431.80	363.70	412.20	455.90	370.20	431.20	411.80	268.90	352.20
1987-88	458.60	389.70	438.40	485.00	397.00	459.20	440.10	295.10	379.60
1988-89	481.50	424.30	465.70	517.60	435.10	494.90	473.40	315.10	408.50
1989-90	517.50	454.90	499.40	560.70	466.50	533.50	511.60	338.00	437.80
1990-91	561.30	486.10	537.90	598.90	496.10	566.90	546.70	358.10	462.00
1991-92	588.40	524.10	567.80	624.90	534.00	595.80	564.80	386.90	483.70
1992-93	610.10	534.90	585.40	646.40	546.80	613.70	560.00	382.60	477.40
1993-94	625.10	547.60	600.00	667.50	560.10	632.70	595.10	396.60	503.30
1994-95	632.70	559.10	608.20	681.70	572.50	645.30	599.90	411.90	513.40
PERCENTAGE CHANGE FROM PREVIOUS YEAR									
1984-85	6.6	8.4	7.3	7.9	8.5	8.4	5.9	9.3	7.6
1985-86	6.4	6.6	6.4	6.0	6.4	6.1	5.9	5.9	5.8
1986-87	6.3	6.8	6.2	5.6	6.8	5.6	5.9	6.4	5.3
1987-88	6.2	7.1	6.4	6.4	7.2	6.5	6.9	9.7	7.8
1988-89	5.0	8.9	6.2	6.7	9.6	7.8	7.6	6.8	7.6
1989-90	7.5	7.2	7.2	8.3	7.2	7.8	8.1	7.3	7.2
1990-91	8.5	6.9	7.7	6.8	6.3	6.3	6.9	5.9	5.5
1991-92	4.8	7.8	5.6	4.3	7.6	5.1	3.3	8.0	4.7
1992-93	3.7	2.1	3.1	3.4	2.4	3.0	-0.8	-1.1	-1.3
1993-94	2.5	2.4	2.5	3.3	2.4	3.1	6.3	3.7	5.4
1994-95	1.2	2.1	1.4	2.1	2.2	2.0	0.8	3.9	2.0
QUARTERLY (\$ per week)									
1992 - 93 -									
19 February	610.10	533.30	584.80	648.50	543.90	614.10	559.50	381.60	477.70
20 May	610.00	543.70	589.00	645.10	557.10	617.20	565.50	385.30	484.50
1993 - 94 -									
20 August	631.00	546.90	603.30	673.30	559.50	635.80	599.70	394.20	503.10
19 November	626.50	543.20	599.40	667.10	554.90	630.70	583.50	386.70	492.50
18 February	619.90	548.80	597.30	665.30	558.80	631.50	601.30	405.50	512.80
20 May	622.90	551.40	599.80	664.30	567.10	632.90	595.80	399.80	504.80
1994 - 95 -									
19 August	628.20	553.70	602.60	674.20	566.70	637.20	591.40	410.80	507.40
18 November	619.10	558.00	598.60	667.50	572.80	635.70	586.90	410.20	505.10
17 February	648.40	560.80	619.90	699.90	572.80	658.50	620.10	415.80	527.90
19 May	635.10	563.90	611.70	685.20	577.80	649.90	601.10	410.80	513.30
18 August	639.90	560.10	613.80	684.50	571.80	647.60	600.80	408.60	510.20
PERCENTAGE CHANGE FROM CORRESPONDING REFERENCE DATE IN PREVIOUS YEAR									
1993 - 94 -									
18 February	1.6	2.9	2.1	2.6	2.7	2.8	7.5	6.3	7.3
20 May	2.1	1.4	1.8	3.0	1.8	2.5	5.4	3.8	4.2
1994 - 95 -									
19 August	-0.4	1.2	-0.1	0.1	1.3	0.2	-1.4	4.2	0.9
18 November	-1.2	2.7	-0.1	0.1	3.2	0.8	0.6	6.1	2.6
17 February	4.6	2.2	3.8	5.2	2.5	4.3	3.1	2.5	2.9
19 May	2.0	2.3	2.0	3.1	1.9	2.7	0.9	2.8	1.7
18 August	1.9	1.2	1.9	1.5	0.9	1.6	1.6	-0.5	0.6
PERCENTAGE CHANGE FROM PREVIOUS REFERENCE DATE									
1992 - 93 -									
20 May	0.0	2.0	0.7	-0.5	2.4	0.5	1.1	1.0	1.4
1993 - 94 -									
20 August	3.4	0.6	2.4	4.4	0.4	3.0	6.0	2.3	3.8
19 November	-0.7	-0.7	-0.6	-0.9	-0.8	-0.8	-2.7	-1.9	-2.1
18 February	-1.1	1.0	-0.4	-0.3	0.7	0.1	3.1	4.9	4.1
20 May	0.5	0.5	0.4	-0.2	1.5	0.2	-0.9	-1.4	-1.6
1994 - 95 -									
19 August	0.9	0.4	0.5	1.5	-0.1	0.7	-0.7	2.8	0.5
18 November	-1.4	0.8	-0.7	-1.0	1.1	-0.2	-0.8	-0.1	-0.5
17 February	4.7	0.5	3.6	4.9	0.0	3.6	5.7	1.4	4.5
19 May	-2.1	0.6	-1.3	-2.1	0.9	-1.3	-3.1	-1.2	-2.8
18 August	0.8	-0.7	0.3	-0.1	-1.0	-0.4	0.0	-0.5	-0.6

**FINANCE COMMITMENTS**  
**South Australia**

Secured housing finance commitments to individuals						
<i>Construction and purchase of dwellings</i>						
Period	Number of dwelling units	Amount (\$ million)	Alterations and additions (\$ million)	Personal finance commitments (\$ million)	Commercial finance commitments (\$ million)	Lease finance commitments (\$ million)
ANNUAL						
1983-84	27,968	894.0	45.2	n.a.	n.a.	n.a.
1984-85	28,484	1,127.6	48.2	n.a.	n.a.	n.a.
1985-86	21,714	920.1	48.9	1,203.9	3,492.7	339.8
1986-87	21,658	965.5	47.1	1,222.4	4,242.8	334.5
1987-88	26,582	1,266.6	47.0	1,448.9	6,486.6	392.1
1988-89	29,977	1,574.2	51.4	1,534.1	7,285.5	512.4
1989-90	25,650	1,438.2	45.8	1,525.7	6,926.4	445.4
1990-91	28,694	1,731.3	58.8	1,503.6	6,257.0	323.2
1991-92	31,765	2,083.8	88.8	1,456.7	6,666.4	256.2
1992-93	36,960	2,569.5	102.8	1,656.8	5,122.4	249.5
1993-94	45,725	3,387.9	221.8	1,840.5	5,467.2	250.6
1994-95	36,414	2,878.6	242.2	2,152.2	5,752.1	271.5
PERCENTAGE CHANGE FROM PREVIOUS YEAR						
1984-85	1.8	26.1	6.6	n.a.	n.a.	n.a.
1985-86	-23.8	-18.4	1.5	n.a.	n.a.	n.a.
1986-87	-0.3	4.9	-3.7	1.5	21.5	-1.6
1987-88	22.7	31.2	-0.2	18.5	52.9	17.2
1988-89	12.8	24.3	9.4	5.9	12.3	30.7
1989-90	-14.4	-8.6	-10.9	-0.5	-4.9	-13.1
1990-91	11.9	20.4	28.4	-1.4	-9.7	-27.4
1991-92	10.7	20.4	51.0	-3.1	6.5	-20.7
1992-93	16.4	23.3	15.8	13.7	-23.2	-2.6
1993-94	23.7	31.9	115.8	11.1	6.7	0.5
1994-95	-20.4	-15.0	9.2	16.9	5.2	8.3
MONTHLY						
1994 - 95 -						
August	3,580	276.2	25.0	170.0	701.4	25.6
September	3,209	248.5	17.5	169.2	361.3	24.5
October	3,051	234.0	20.1	163.5	417.6	20.6
November	3,228	252.4	20.9	191.0	493.2	19.7
December	2,839	220.6	20.6	174.5	575.3	23.0
January	2,643	210.3	15.6	160.8	348.7	21.4
February	2,629	215.4	20.9	169.6	411.0	17.3
March	3,228	260.7	21.4	206.7	468.1	20.8
April	2,390	192.8	19.0	156.6	397.4	14.3
May	2,923	236.9	18.9	193.6	588.8	26.0
June	3,290	268.2	21.7	233.5	556.7	31.7
1995 - 96 -						
July	3,013	243.5	19.3	192.7	529.9	27.4
August	3,315	256.7	17.9	209.6	499.6	20.0
September	3,167	241.8	18.2	182.4	421.6	18.2
October	3,287	249.6	19.6	187.6	449.7	18.8
PERCENTAGE CHANGE FROM PREVIOUS MONTH						
1994 - 95 -						
September	-10.4	-10.0	-30.0	-0.5	-48.5	-4.3
October	-4.9	-5.8	14.9	-3.4	15.6	-16.0
November	5.8	7.9	4.0	16.8	18.1	-4.1
December	-12.1	-12.6	-1.4	-8.6	16.6	16.5
January	-6.9	-4.7	-24.3	-7.9	-39.4	-7.0
February	-0.5	2.4	34.0	5.5	17.9	-19.1
March	22.8	21.0	2.4	21.9	13.9	19.9
April	-26.0	-26.0	-11.2	-24.2	-15.1	-31.0
May	22.3	22.9	-0.5	23.6	48.2	81.8
June	12.6	13.2	14.8	20.6	-5.4	21.9
1995 - 96 -						
July	-8.4	-9.2	-11.1	-17.5	-4.8	-13.7
August	10.0	5.4	-7.0	8.8	-5.7	-26.9
September	-4.5	-5.8	1.4	-13.0	-15.6	-9.1
October	3.8	3.2	7.6	2.8	6.7	3.3

## PUBLICATIONS SOURCE INDEX

- 1 *Australian National Accounts: State Accounts* (5242.0) Quarterly
- 2 *International Merchandise Trade, Australia* (5422.0) Quarterly
- 3 *Retail Trade, Australia* (8501.0) Monthly
- 4 *New Motor Vehicles Registrations, Australia, Preliminary* (9301.0) Monthly
- 5 *Tourist Accommodation, Australia* (8635.0) Quarterly
- 6 *State Estimates of Private New Capital Expenditure* (5646.0) Quarterly
- 7 *Building Approvals, Australia* (8731.0) Monthly
- 8 *Building Activity, Australia* (8752.0.40.001) Quarterly
- 8a *Building Activity, Australia, Dwelling Unit Commencements, Preliminary* (8752.0) Quarterly
- 9 *Engineering Construction Activity, Australia* (8762.0.40.001) Quarterly
- 10 *Manufacturing Production, Australia, Preliminary* (8301.0) Monthly
- 11 *Livestock Products, Australia* (7215.0) Monthly
- 12 *Actual and Expected Private Mineral Exploration, Australia* (8412.0) Quarterly
- 13 *Consumer Price Index* (6401.0) Quarterly
- 14 *Price Index of Materials Used in House Building, Six State Capital Cities and Canberra* (6408.0) Monthly
- 15 *Price Index of Materials Used in Building Other Than House Building, Six State Capital Cities and Canberra* (6407.0) Monthly
- 16 *House Price Indexes: Eight Capital Cities* (6416.0) Quarterly
- 17 *Australian Demographic Statistics* (3101.0) Quarterly
- 18 *The Labour Force, Australia, Preliminary* (6202.0) Monthly
- 19 *Job Vacancies and Overtime, Australia* (6354.0) Quarterly
- 20 *Industrial Disputes, Australia* (6321.0) Monthly
- 21 Unpublished overseas arrival and departure statistics on microfiche
- 22 *Average Weekly Earnings, States and Australia* (6302.0) Quarterly
- 23 *Award Rates of Pay Indexes, Australia* (6312.0) Monthly
- 24 *Housing Finance for Owner Occupation, Australia* (5609.0) Monthly
- 25 Unpublished statistics available from PC AUSSTATS
- 26 *Reserve Bank of Australia Bulletin*

## ABS PUBLICATIONS AND PRODUCTS

Statistics collected by the ABS are generally made available to clients in published form. Some, including those not published, are available in one or more of the following forms: microfiche, magnetic tape, computer printout, CD, floppy disk, photocopy and clerically extracted tabulation.

Current publications produced by the ABS are listed in the *Catalogue of Publications and Products, Australia* (1101.0). The ABS also issues on Tuesdays and Fridays a *Release Advice* (1105.0) which lists publications to be released within the next few days. The *Catalogue and Publications Advice* are available from any ABS Office.

To receive ABS publications on a regular basis contact the *ABS Publication Mailing Service* on (008) 02 0608.

A large range of data is available via on-line services, diskette, magnetic tape, tape cartridge and CD ROM. For more details about our electronic data services, contact any ABS Office.

The *ABS Information Consultancy Service* has specialist staff to assist and advise clients with

their statistical inquiries. For more detailed information about these services call at the ABS, 55 Currie Street, Adelaide, telephone the Information Officer on (08) 237 7100, or write to Information Service, ABS, GPO Box 2272, Adelaide 5001.

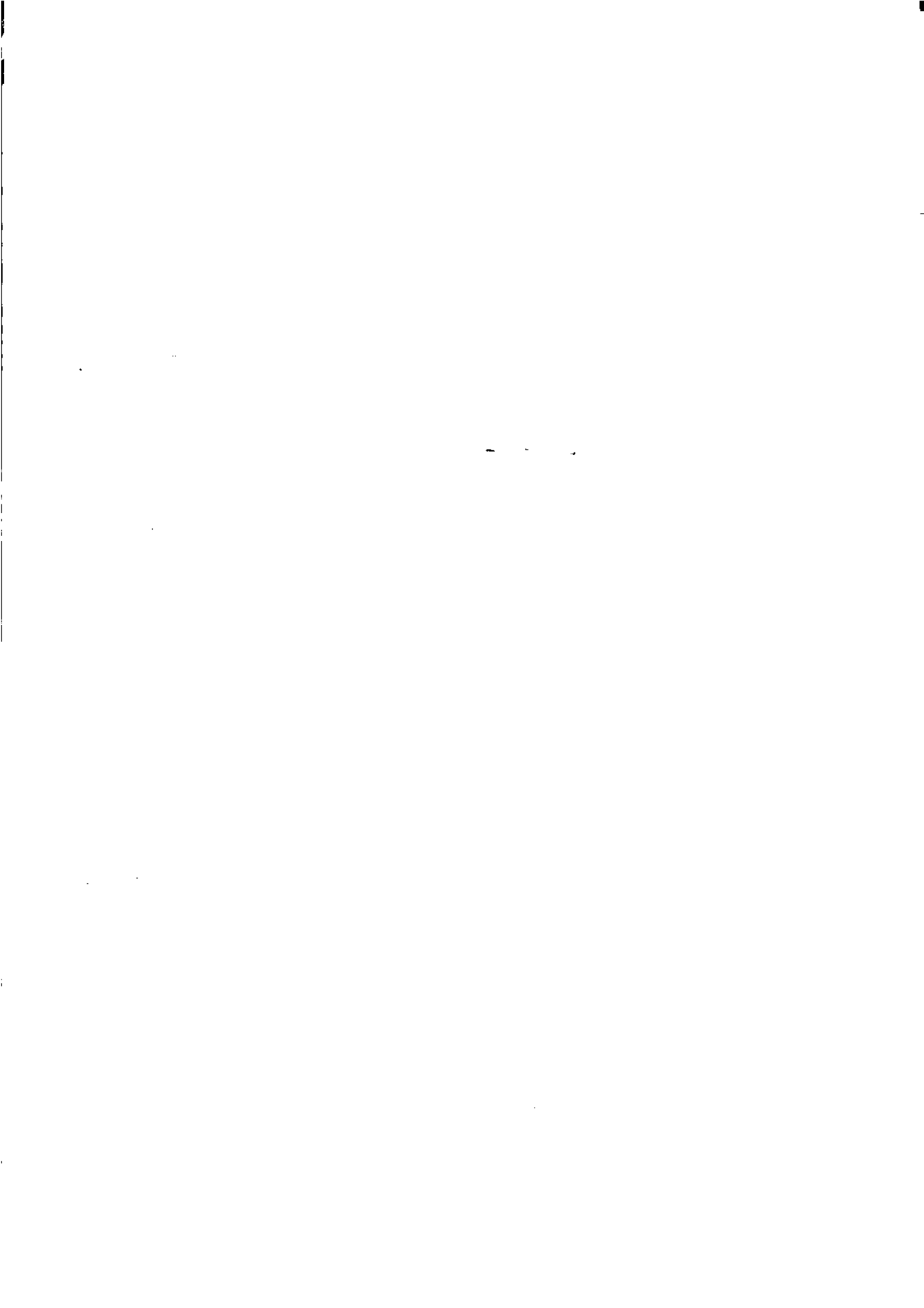
The ABS also provides a *Statistical Consultancy Service*, for expert assistance in survey, sample and questionnaire design, data collection, processing and analysis, and statistical modelling. For more information contact Gary Niedorfer, telephone (08) 237 7379.

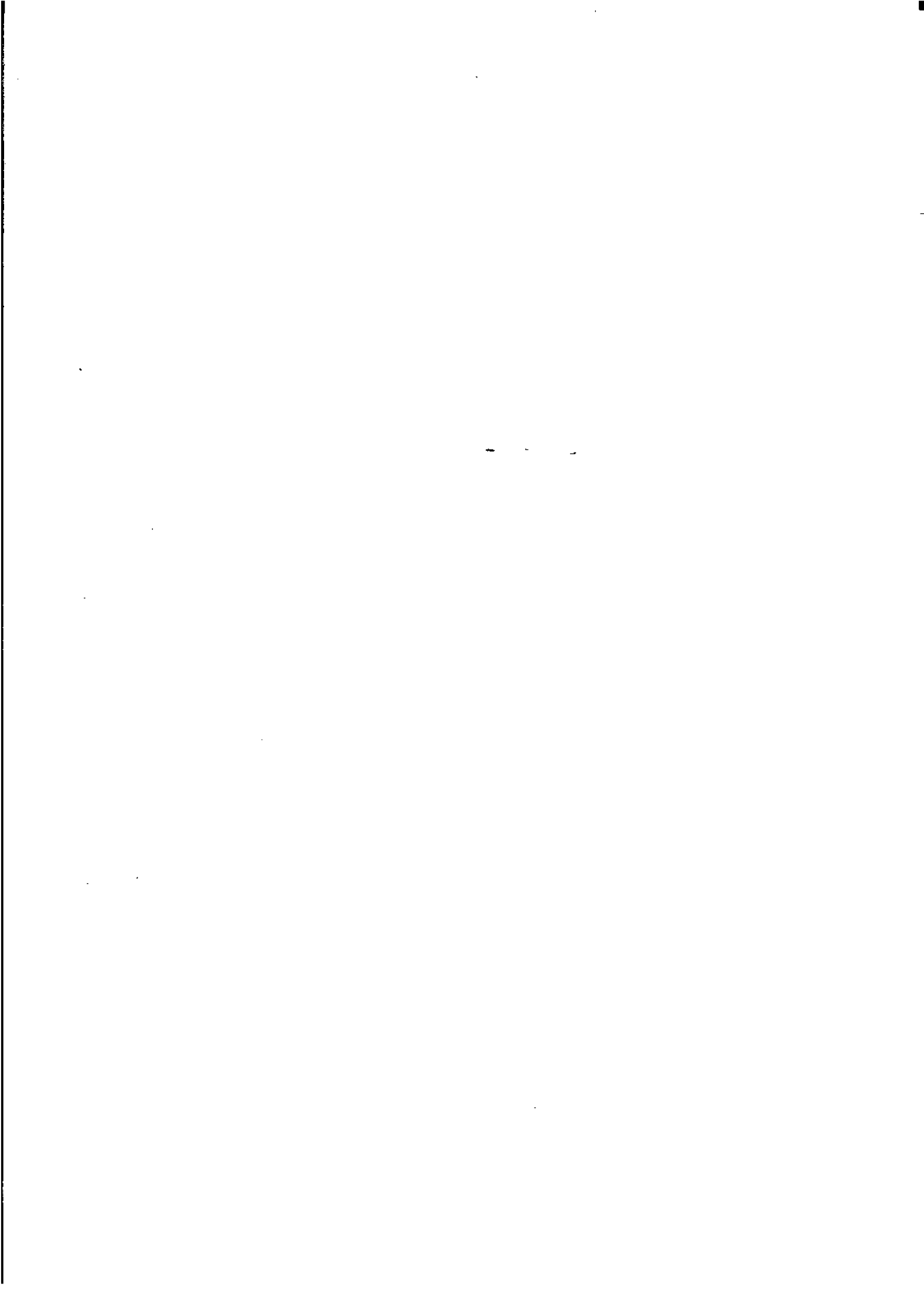
## SYMBOLS AND OTHER USAGES

n.a.	not available
n.y.a.	not yet available
..	not applicable
0, 0.0	nil or rounded to zero

Where figures have been rounded, discrepancies may occur between sums of the component items and totals.









© Commonwealth of Australia 1995

**Recommended retail price: \$12.00**



**2130740001963**

**ISSN 1039-8880**